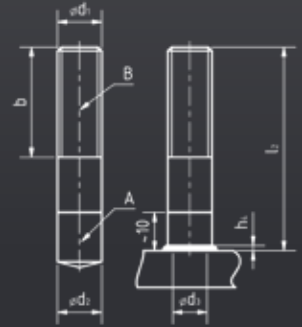




# KÖCO PD DUO

Drawn arc bi-metallic threaded stud

- Material A: 4.8 weldable
- B: 1.4301 or 1.4 571
- Other types and dimensions upon request.



$d_1$	$l_2$	$h_2^1$	$d_2$	$d_3^1$	$b$	Part-no.	Mass kg/100	Ceramic ferrule	Chuck	Ferrule Grip	Foot Assembly
M8	30	3	7,1	10	15	Upon request.		PF 8	350-0007-000	355-0003-000	360-0101-000 K 360-0013-000 SK
	35				20						
	40				25						
	45				30						
	50				40						
M10	30	3	8,95	12,5	15	Upon request.		PF 10	350-0009-000	355-0004-000	360-0101-000- K 360-0013-000-SK
	35				20						
	40				25						
	45				30						
	50				40						
	55				40						
M12	30	4,5	10,8	14,5	15	Upon request.		PF 12	350-0011-000	355-0005-000	360-0101-000 K 360-0013-000 SK
	35				20						
	40				25						
	45				30						
	50				35						
	55				40						
	100				40						
	140				80						

<sup>1</sup>  $h_2$  and  $d_3$  are approximate values.

