

# MIG/MAG- Welding torches

## ABIMIG® 300 ABIMIG® 300 T air cooled



ABICOR BINZEL.  
The right welding  
torch for every  
job!

Welding torches of the ABIMIG® series feature either fixed or adjustable and changeable neck options. Different handle variants and trigger lengths are also available.

The ergonomic handle and the high flexible cable assembly make

welding more comfortable and less tiring.

Welding torches of range ABIMIG® 300 due to their robust construction and functionality are ideal for a variety of industrial uses.

### Technical data (EN 60 974-7):

Rating:	315 A CO <sub>2</sub> 250 A Mixed Gases M 21 (DIN EN 439) 60% Duty Cycle
Wire sizes:	0.8 - 1.4

Rated using power source with VDE standard volt/amp characteristic ( $U=14+0.05x$ ). When pulse welding, reduce rating by 35%.

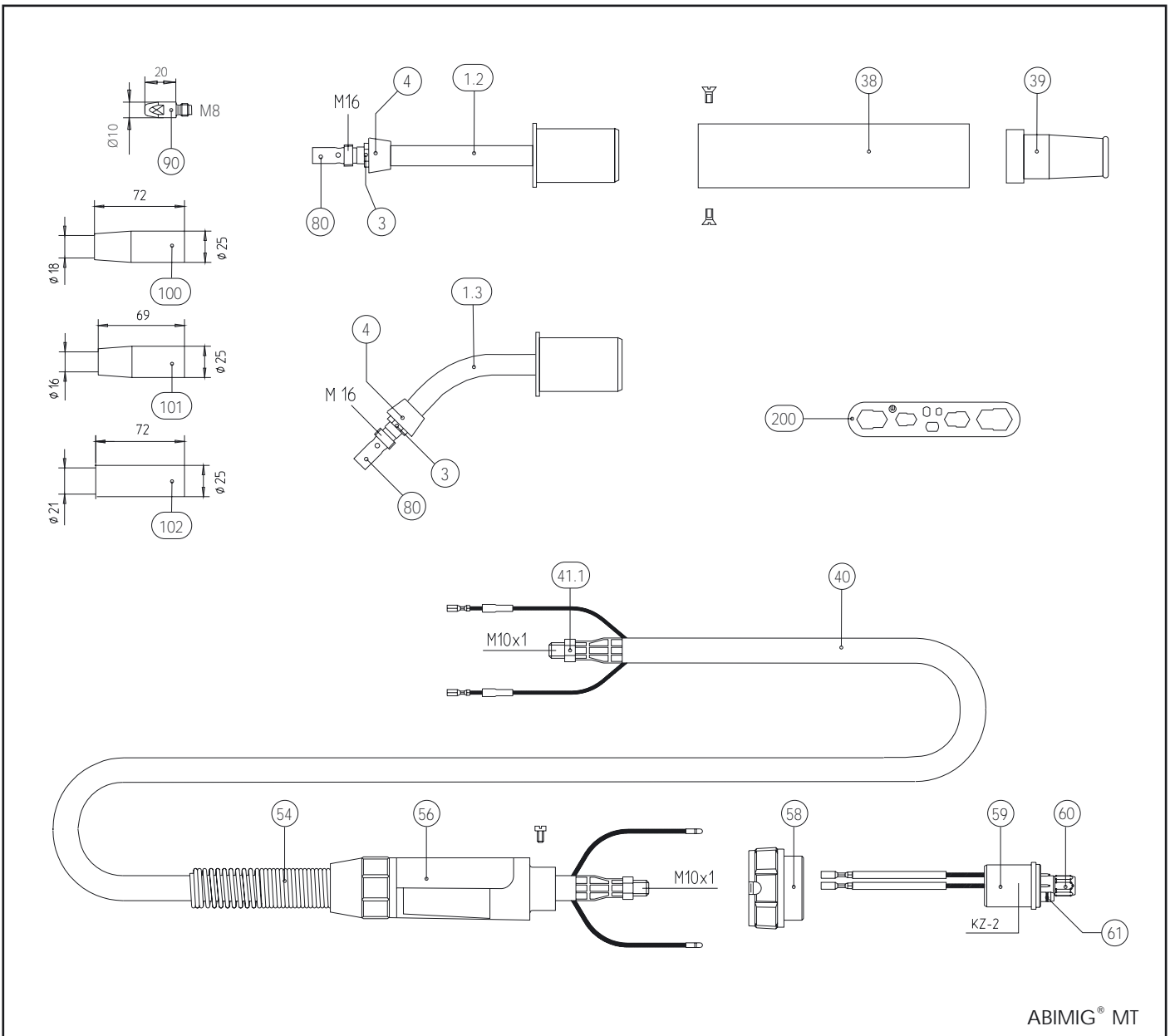
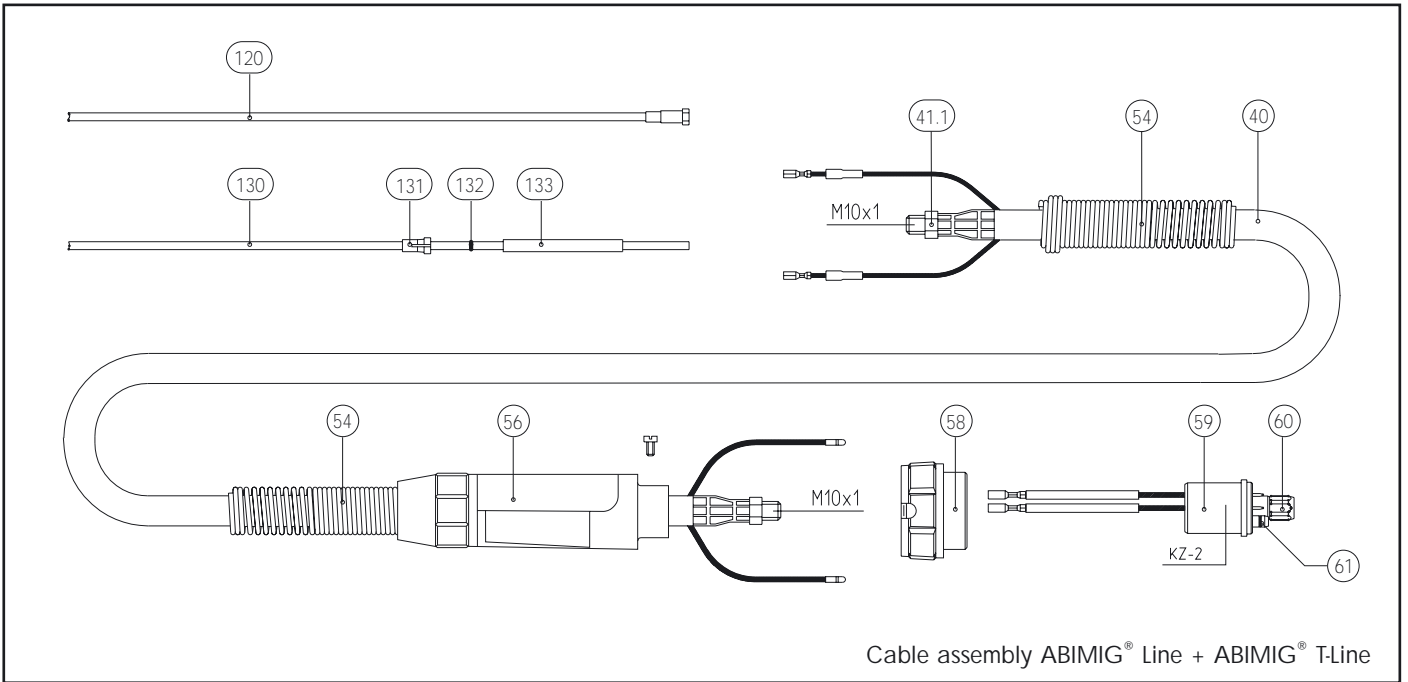
Type	Version	3.00 m long	4.00 m long	5.00 m long
		Part no.	Part no.	Part no.
ABIMIG® 300 S	Swan neck 50° bent, fixed, metal jacket and handle S	767.D300	767.D307	767.D308
ABIMIG® 300 TM S*	Swan neck 45° bent, rotating, metal jacket and handle S	018.D537	018.D538	018.D539
ABIMIG® MT 300 0°	Machine torch neck, straight, fixed, metal jacket and handle tube	767.D310	767.D311	767.D312
ABIMIG® MT 300 45°	Machine torch neck 45° bent, fixed, metal jacket and handle tube	767.D313	767.D314	767.D315

\*Attention! Due to the manifold possible variations of ABIMIG® T in this table is shown only a preference torch. Different options are available according to the part list of this leaflet. Please state in your order verbally.

Welding & cutting brought to the point.







Subject to change without notice. Guarantee for Genuine BINZEL spares only.

Build group	Pos.	Description	Specifications	Part no.	
<b>Torch</b>	1.1	Swan neck ABIMIG® 300	for contact tip BINZEL M8 Pos. 90	767.D301 •	
		Swan neck ABIMIG® 300	for contact tip HAUFÉ M6 Pos. 91	767.D309	
	1.2	Swan neck ABIMIG® MT 300 0°	for contact tip BINZEL M8 Pos. 90	767.D316 •	
	1.3	Swan neck ABIMIG® MT 300 45°	for contact tip BINZEL M8 Pos. 90	767.D317 •	
	1.4	Swan neck ABIMIG® 300 T 45°	for contact tip BINZEL M8 Pos. 90	018.D772	
		Swan neck ABIMIG® 300 T8 45°	for contact tip BINZEL M8 Pos. 90	018.D780	
		Swan neck ABIMIG® 300 TM 45°	for contact tip BINZEL M8 Pos. 90	018.D777 •	
		Swan neck ABIMIG® 300 T8M 45°	for contact tip BINZEL M8 Pos. 90	018.D784	
		Swan neck ABIMIG® 300 T 45°	for contact tip HAUFÉ M6 Pos. 91	018.D788	
		Swan neck ABIMIG® 300 T8 45°	for contact tip HAUFÉ M6 Pos. 91	018.D790	
		Swan neck ABIMIG® 300 TM 45°	for contact tip HAUFÉ M6 Pos. 91	018.D789	
		Swan neck ABIMIG® 300 T8M 45°	for contact tip HAUFÉ M6 Pos. 91	018.D791	
		1.5	Swan neck ABIMIG® 300 T K45°	for contact tip BINZEL M8 Pos. 90	014.D727
			Swan neck ABIMIG® 300 T8 K45°	for contact tip BINZEL M8 Pos. 90	014.D798
	Swan neck ABIMIG® 300 TM K45°		for contact tip BINZEL M8 Pos. 90	014.D794	
	Swan neck ABIMIG® 300 T8M K45°		for contact tip BINZEL M8 Pos. 90	014.D802	
	Swan neck ABIMIG® 300 T K45°		for contact tip HAUFÉ M6 Pos. 91	014.D821	
	Swan neck ABIMIG® 300 T8 K45°		for contact tip HAUFÉ M6 Pos. 91	014.D819	
	Swan neck ABIMIG® 300 TM K45°		for contact tip HAUFÉ M6 Pos. 91	014.D818	
	Swan neck ABIMIG® 300 T8M K45°		for contact tip HAUFÉ M6 Pos. 91	014.D820	
	1.6	Swan neck ABIMIG® 300 T L45°	for contact tip BINZEL M8 Pos. 90	014.D782	
		Swan neck ABIMIG® 300 T8 L45°	for contact tip BINZEL M8 Pos. 90	014.D791	
		Swan neck ABIMIG® 300 TM L45°	for contact tip BINZEL M8 Pos. 90	014.D786	
		Swan neck ABIMIG® 300 T8M L45°	for contact tip BINZEL M8 Pos. 90	014.D792	
		Swan neck ABIMIG® 300 T L45°	for contact tip HAUFÉ M6 Pos. 91	014.D815	
		Swan neck ABIMIG® 300 T8 L45°	for contact tip HAUFÉ M6 Pos. 91	014.D790	
		Swan neck ABIMIG® 300 TM L45°	for contact tip HAUFÉ M6 Pos. 91	014.D816	
Swan neck ABIMIG® 300 T8M L45°		for contact tip HAUFÉ M6 Pos. 91	014.D817		
3		Counter nut M12x1 LH	10 pcs	018.D708	
4		Spacer for metal jacket	10 pcs	766.D046 •	
	Spacer	10 pcs	018.D236		
8	Cap nut M22x1.5 for metal jacket		014.D256 •		
	Cap nut M22x1.5		018.D762		
<b>Handle</b>	10.1	Handle S, cpl. for ABIMIG® Line		180.D034 •	
	10.2	Handle S, cpl. for ABIMIG® T-Line		180.D026 •	
	10.3	Handle L, cpl. for ABIMIG® T-Line		180.D054	
	10.4	Handle V, cpl. for ABIMIG® T-Line		180.D024	
		Cover plate for handle V		400.0359	
	11	Cable support for handle L		400.D267	
	12	Intermediate piece		400.0044	
	15	Swan neck mounting M22x1.5 with octagon junction		004.D299	
	17	Switch guard		400.D252	
	18	Trigger, long		185.D037 •	
	18.1	Trigger, short		185.D024	
	38	Handle tube AUT		180.D040	
	39	Cable support for BIKOX® B5-B6-B7		400.0099	

Build group	Pos.	Description	Specifications	Part no.
<b>Cable assembly</b>	40	BIKOX® R cable assembly B6	for 3.00 m	160.D430
		BIKOX® R cable assembly B6	for 4.00 m	160.D431
		BIKOX® R cable assembly B6	for 5.00 m	160.D432
	41.1	Hexagonal nut M10x1		001.0009
	54	Cable support spring dia. 21		400.D205
	56	Cable support, machine side		500.D035
	58	Connecting nut		500.0213
	59	Central adaptor plug KZ-2		501.0003
	60	Nut M10x1	10 pcs	501.0082
	61	O-ring 4x1	20 pcs	165.0002
	<b>Wear parts</b>	80	Tip holder M16/M8/45 LH	10 pcs
		for contact tip BINZEL Pos. 90		
		Tip holder M16/M6/49 LH	10 pcs	018.D764
		for contact tip HAUFE Pos. 91		
90		Contact tip M8, E-Cu    ∅ 0.8	10 pcs	140.0114
		Contact tip M8, E-Cu    ∅ 1.0	10 pcs	140.0313
		Contact tip M8, E-Cu    ∅ 1.2	10 pcs	140.0442
		Contact tip M8, E-Cu    ∅ 1.4	10 pcs	140.0533
		Contact tip M8, CuCrZr   ∅ 0.8	10 pcs	140.0117
		Contact tip M8, CuCrZr   ∅ 1.0	10 pcs	140.0316
		Contact tip M8, CuCrZr   ∅ 1.2	10 pcs	140.0445 •
		Contact tip M8, E-Cu    ∅ 1.4	10 pcs	140.0536
		Contact tip M8, E-Cu    ∅ 0.8 for Aluminium wire	10 pcs	141.0003
		Contact tip M8, E-Cu    ∅ 1.0 for Aluminium wire	10 pcs	141.0008
		Contact tip M8, E-Cu    ∅ 1.2 for Aluminium wire	10 pcs	141.0015
		Contact tip M8, E-Cu    ∅ 1.4 for Aluminium wire	10 pcs	141.0055
91		Contact tip M6, E-Cu    ∅ 1.8	10 pcs	140.D101
		Contact tip M6, E-Cu    ∅.1.0	10 pcs	140.D102
		Contact tip M6, E-Cu    ∅ 1.2	10 pcs	140.D103
		Contact tip M8, E-Cu    ∅ 1.4	10 pcs	140.0104
100		Gas nozzle M16, dia 18 plated	10 pcs	145.D021 •
101		Gas nozzle M16, dia 16 plated, short	10 pcs	145.D022
102		Gas nozzle M16, dia 21 plated, cylindrical	10 pcs	145.D024
		Gas nozzle M16, dia 15 bare, with prol. Insulation	10 pcs	145.D217
		Gas nozzle M16, dia 18 bare, with prol. Insulation	10 pcs	145.D194
110		Neck liner 1.5 for wire ∅ 0.6-1.0	for ABIMIG® T-Line	122.D037
		Neck liner 2.0 for wire ∅ 1.0-1.2	for ABIMIG® T-Line	122.D038 •
	Neck liner 2.5 for wire ∅ 1.2-1.4	for ABIMIG® T-Line	122.D039	
	Neck liner 1.6 brass	for ABIMIG® T-Line	122.D040	
	for Wire ∅ 0.6-1.0			
	Neck liner 2.2 brass	for ABIMIG® T-Line	122.D041	
	for Wire ∅ 1.0-1.4			
120	Torch liner insulated 1.5/4.5 blue with	for 3.00 m	124.0011	
	collet for wire ∅ 0.8-1.0	for 4.00 m	124.0012	
		for 5.00 m	124.0015	

Build group	Pos.	Description	Specificatios	Part no.
		Torch liner insulated 2.0/4.5 red with collet for wire Ø 1.0-1.2	for 3.00 m for 4.00 m for 5.00 m	124.0026 • 124.0031 • 124.0035 •
		Torch liner insulated 2.5/4.5 yellow with collet for wire Ø 1.4-1.6	for 3.00 m for 4.00 m for 5.00 m	124.0041 124.0042 124.0044
	130	Teflon liner 1.5/4.0 blue with collet and O-ring for wire Ø 0.6-1.0	for 3.00 m for 4.00 m for 5.00 m	126.0005 126.0008 126.0011
		Teflon liner 2.0/4.0 red with collet and O-ring for wire Ø 1.0-1.4	for 3.00 m for 4.00 m for 5.00 m	126.0021 126.0026 126.0028
		Carbon teflon liner 1.5/4.0 with collet and O-ring for wire Ø 0.6-1.0	for 3.00 m for 4.00 m for 5.00 m	127.0002 127.0003 127.0004
		Carbon teflon liner 2.0/4.0 with collet and O-ring for wire Ø 1.0-1.4	for 3.00 m for 4.00 m for 5.00 m	127.0005 127.0007 127.0008
	131	Collet for core liner with outer diameter 4.0	20 Pcs	131.0001
	132	O-ring 3.5x1.5	20 Pcs	165.0008
	133	Guide tube with outer diameter 5.0 for core liners up to outer diameter 4.0	up to 200 mm	129.xxxx
	200	Spanner for ABIMIG®		191.D030

- Standard-equipment

---

## Explanation of Encoding

---

### ABIMIG® - Torches

ABIMIG® 300 S	Torch of series ABIMIG® range 300
ABIMIG® 300 TM S	Torch of series ABIMIG® T range 300

### ABIMIG® - Machine torches

ABIMIG® MT 300 0°	} Machine torches ABIMIG® MT range 300
ABIMIG® MT 300 45°	

### Swan necks

T	Neck exchange system; turnable and to be unfastened at any time
T8	Neck exchange system; fixable in 8 positions and to be unfastened at any time
TM	as T; but with metal jacket
T8M	as T8; but with metal jacket
K45°	Swan neck short 45° bent
L 45°	Swan neck long 45° bent

### Handles

Handle L	small handle
Handle S	medium handle
Handle V	large handle with space for control modules

---

Welding & cutting brought to the point.



Alexander Binzel Schweisstechnik GmbH & Co. KG  
P.O. Box 10 01 53 · D-35331 Giessen  
Tel.: ++49 (0) 64 08 / 59-0  
Fax: ++49 (0) 64 08 / 59-194  
Internet: [www.binzel-abicor.com](http://www.binzel-abicor.com)