



MIG/MAG Fume Extraction Torches

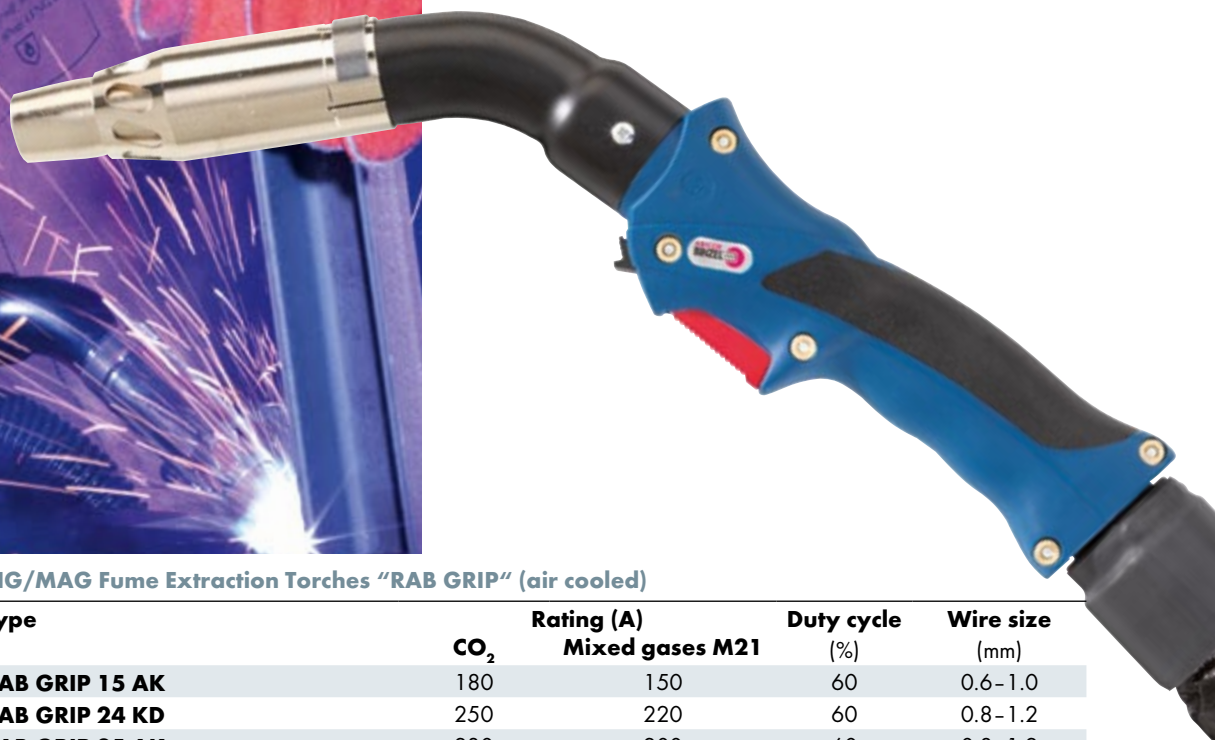
RAB GRIP

air and liquid cooled

“The clean solution”

Every welding job generates fumes and smoke that might be hazardous if inhaled. Based on the well-established torch series “MB” the RAB GRIP fume extraction torches offer efficient fume extraction through the torch. Special design solutions guarantee efficient smoke removal directly at its source without affecting the protective gas shield.

- Direct extraction at the arc – provides a permanent protection of the welder’s respiratory organs
- Problem-free installation in all existing MIG/MAG welding stations
- Small extraction tube diameter – better accessibility
- Aluminum extraction tube – considerable saving of weight
- Handle with extraction control and swivel joint – optimized handling
- A cable assembly with smaller diameters for all types – lower handling weight, optimum flexibility



Technical data (EN 60 974-7)

MIG/MAG Fume Extraction Torches “RAB GRIP” (air cooled)

Type	Rating (A)		Duty cycle (%)	Wire size (mm)
	CO ₂	Mixed gases M21		
RAB GRIP 15 AK	180	150	60	0.6-1.0
RAB GRIP 24 KD	250	220	60	0.8-1.2
RAB GRIP 25 AK	230	200	60	0.8-1.2
RAB GRIP 36 KD	300	270	60	0.8-1.2

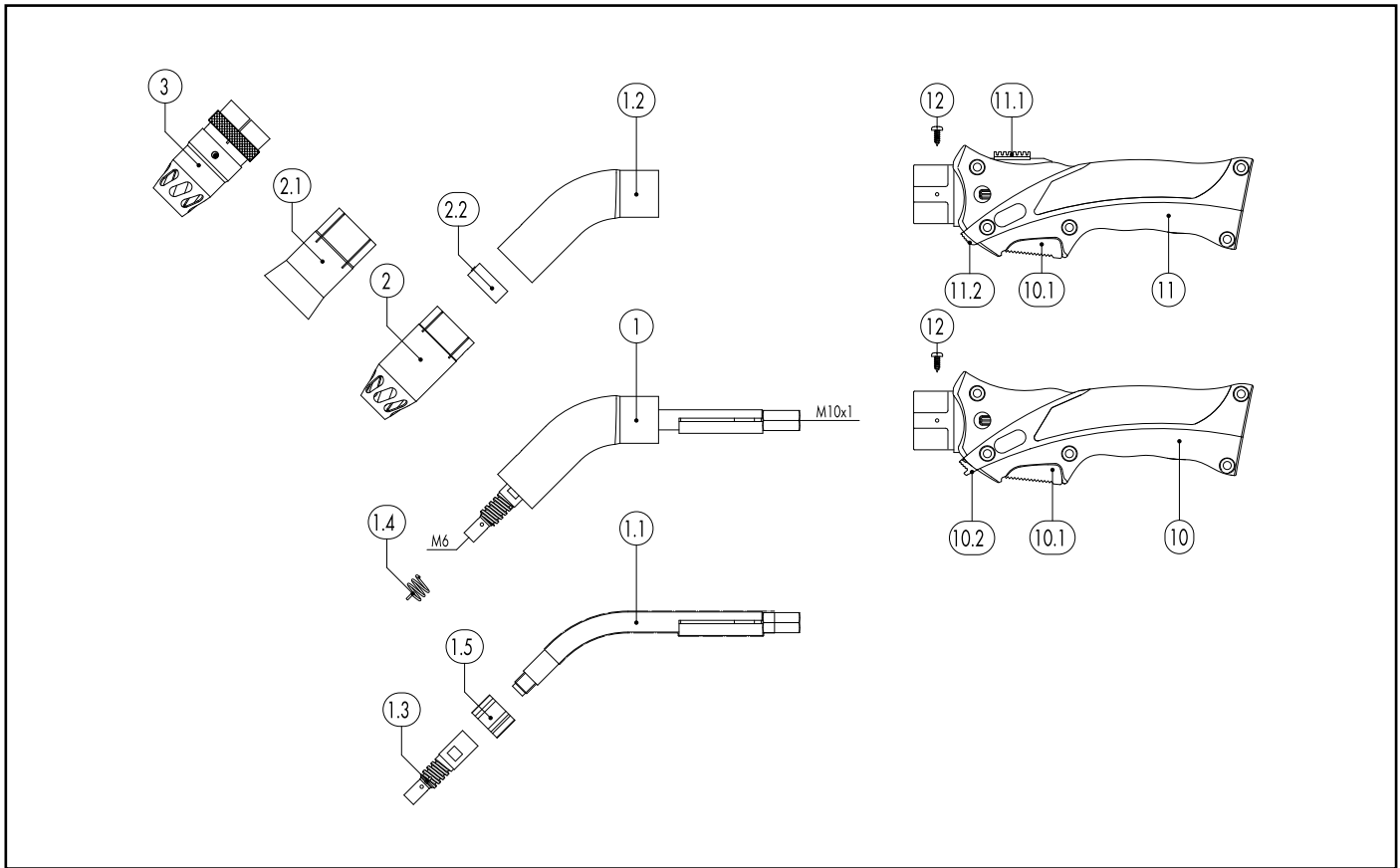
Subject to change without notice.

MIG/MAG Fume Extraction Torches “RAB GRIP” (liquid cooled)

Type	Rating (A)		Duty cycle (%)	Wire size (mm)
	CO ₂	Mixed gases M21		
RAB GRIP 240 D	300	270	100	0.8-1.2
RAB GRIP 501	550	500	100	1.0-1.6
RAB GRIP 501 D	500	450	100	1.0-1.6

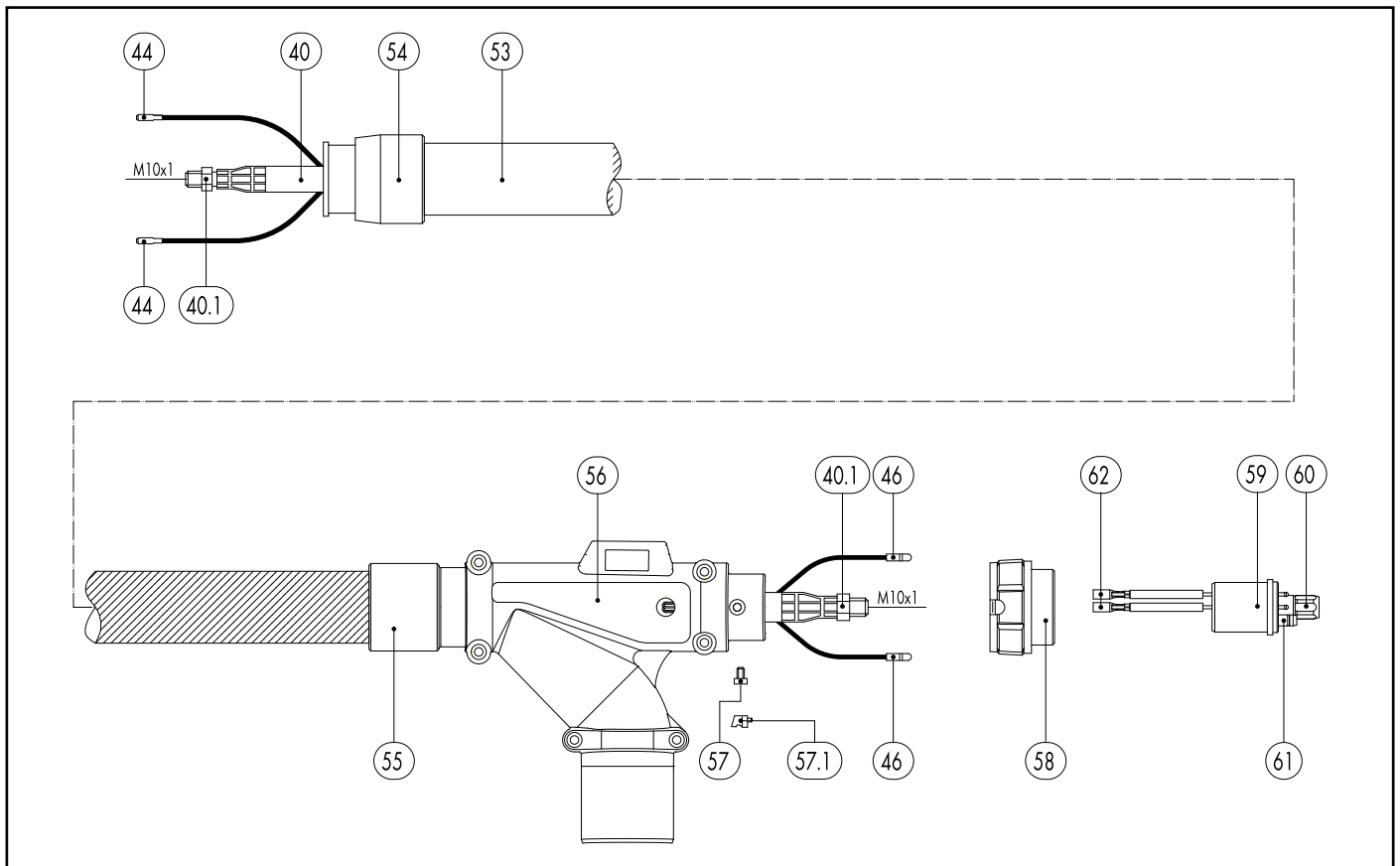
Subject to change without notice.

MIG/MAG Fume Extraction Torches RAB GRIP 15 AK



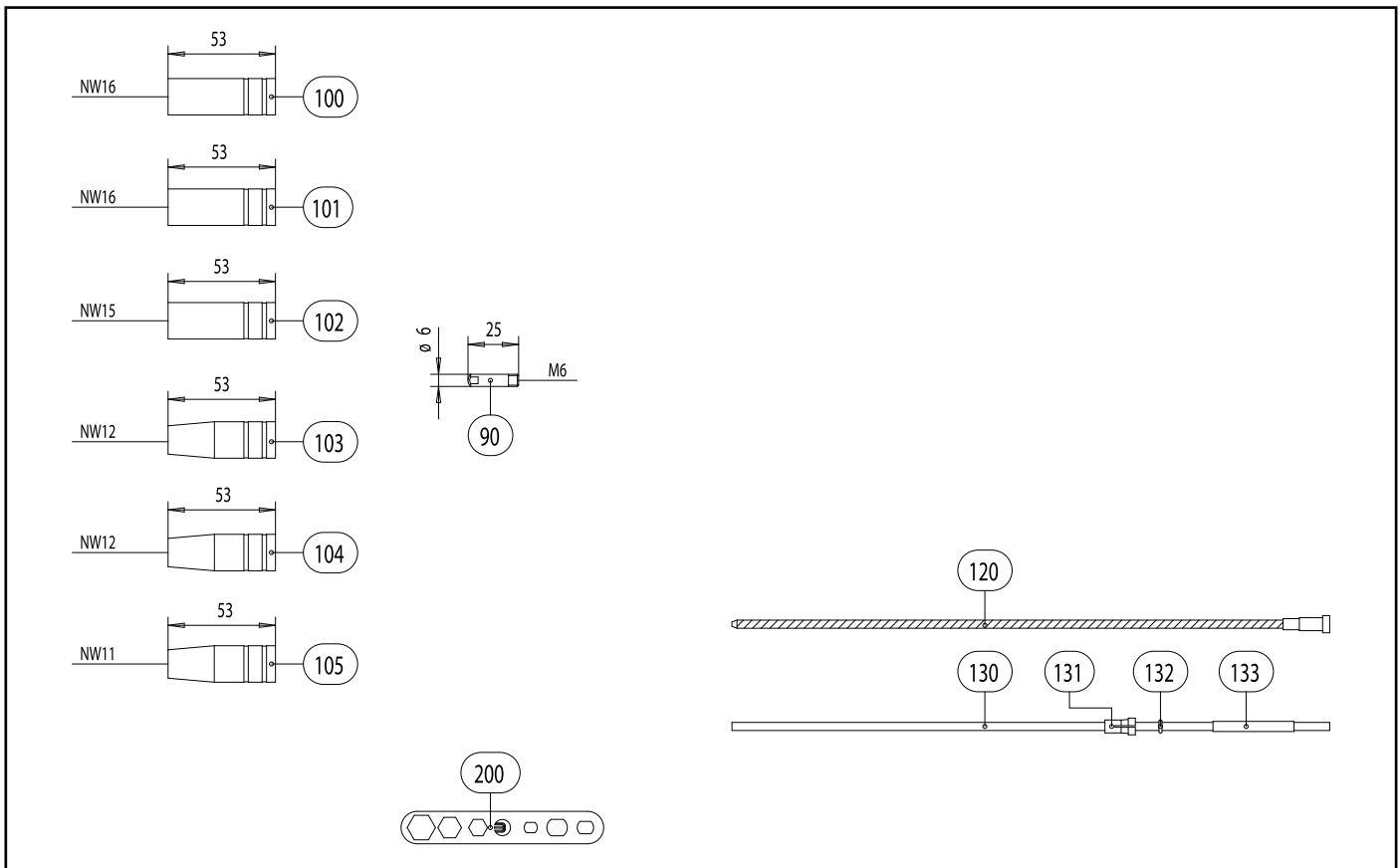
Pos.	Description	Units	Part-No.	Product-group
Torch (Suction nozzle with spring clip, feed air slide below)				
	RAB GRIP 15 AK; central adaptor KZ-2; 3.00 m		602.3001.1	1620
	RAB GRIP 15 AK; central adaptor KZ-2; 4.00 m		602.3002.1	1620
	RAB GRIP 15 AK; central adaptor KZ-2; 5.00 m		602.3003.1	1620
Torch (Suction nozzle with Quicklock, feed air slide on top)				
	RAB GRIP 15 AK Quicklock; central adaptor KZ-2; 3.00 m		602.3008.1	1620
	RAB GRIP 15 AK Quicklock; central adaptor KZ-2; 4.00 m		602.3009.1	1620
	RAB GRIP 15 AK Quicklock; central adaptor KZ-2; 5.00 m		602.3010.1	1620
Swan neck				
1	Swan neck RAB GRIP 15 AK; 45° gebogen		602.3004.1	1007
1.1	Inner neck; 45° bent		602.2002	1095
1.2	Outer neck		600.3007.1	1095
1.3	Gas nozzle holder AUT 15 AK	10 Pcs.	902.0007	1095
1.4	Nozzle spring	100 Pcs.	002.0058	1095
1.5	Insulating part		602.2003	1095
Fume shroud				
2	Fume shroud with spring clip (type 15)		600.2047.1	1602
2.1	Fume shroud (funnel)		602.0040	1602
2.2	Spring clip		600.2037	1095
3	Fume shroud with Quicklock (type 15)		600.3017.1	1602
Handle RAB GRIP standard				
10	Handle RAB GRIP Standard (feed air slide below)		180.0138.1	1095
10.1	Trigger 2-pole GRIP		185.0101	9010
10.2		10 Pcs.	400.1452.10	9010
Handle RAB GRIP ZO				
11	Handle RAB GRIP ZO (feed air slide on top)		180.0144.1	1095

MIG/MAG Fume Extraction Torches RAB GRIP 15 AK



Pos.	Description	Units	Part-No.	Product-group
11.1			400.1631.1	1095
11.2		10 Pcs.	400.1496.10	1095
	Cable assembly			
40	Bikox® LW-power cable, R4 for 3.00 m		160.H025.1	1511
40	Bikox® LW-power cable, R4 for 4.00 m		160.H026.1	1511
40	Bikox® LW-power cable, R4 for 5.00 m		160.H027.1	1511
40.1	Hexagon nut M10x1	10 Pcs.	001.0009	9010
44	Trigger wire connector	20 Pcs.	175.0022	9010
46	Plug	20 Pcs.	175.0004	9010
53	Hose 33 black LW 32 R	30 m	109.0043	4050
54	Connector RAB GRIP 15 / 24 / 25 / 36		600.2008	1095
55			600.3005.1	1095
56			501.2591.1	1095
57	Pan head screw M4x6	20 Pcs.	000.0552	9010
57.1	Screw cap 1	20 Pcs.	500.0251	9010
58	Adaptor nut M33x2		500.0213	9010
59	Central adaptor KZ-2		501.0003	1095
60	Coupling nut M10x1	10 Pcs.	501.0082	9010
61	O-Ring 4x1	20 Pcs.	165.0002	9010
62	Trigger wire connector; female	20 Pcs.	175.0003	9010
	Wear parts			
90	Contact tip M6 E-Cu; Ø 0.8 (6x25)	10 Pcs.	140.0059	1030
90	Contact tip M6 E-Cu; Ø 1.0 (6x25)	10 Pcs.	140.0253	1030
90	Contact tip M6 CuCrZr; Ø 0.8 (6x25)	10 Pcs.	140.0062	1031
90	Contact tip M6 CuCrZr; Ø 1.0 (6x25)	10 Pcs.	140.0256	1031
90	Contact tip M6 E-Cu; Ø 0.8 for alu wire (6x25)	10 Pcs.	141.0002	1030

MIG/MAG Fume Extraction Torches RAB GRIP 15 AK



Pos.	Description	Units	Part-No.	Product-group
90	Contact tip M6 E-Cu; \varnothing 1.0 for alu wire (6x25)	10 Pcs.	141.0007	1030
90	Contact tip M6 CuCrZr silver-plated; \varnothing 0.8 (6x25)	10 Pcs.	147.0062	1031
90	Contact tip M6 CuCrZr silver-plated; \varnothing 1.0 (6x25)	10 Pcs.	147.0256	1031
100	Gas nozzle; cylindrical; ND \varnothing 16.0	10 Pcs.	145.0041	1036
101	Gas nozzle; cylindrical with extended insulation; ND \varnothing 16.0	10 Pcs.	145.0067	1036
102	Gas nozzle; cylindrical; heavy duty; ND \varnothing 15.0	10 Pcs.	145.0072	1036
103	Gas nozzle; conical; ND \varnothing 12.0	10 Pcs.	145.0075	1036
104	Gas nozzle; conical; with extended insulation; ND \varnothing 12.0	10 Pcs.	145.0107	1036
105	Gas nozzle; conical; heavy duty; ND \varnothing 11.0	10 Pcs.	145.0116	1036
120	Guide spiral liner insulated; 1.5/4.5; blue; for wire \varnothing 0.6 - 0.8; for 3.00 m		124.0011	1034
120	Guide spiral liner insulated; 1.5/4.5; blue; for wire \varnothing 0.6 - 0.8; for 4.00 m		124.0012	1034
120	Guide spiral liner insulated; 1.5/4.5; blue; for wire \varnothing 0.6 - 0.8; for 5.00 m		124.0015	1034
120	Guide spiral liner insulated; 2.0/4.5; red; for wire \varnothing 1.0 - 1.2; for 3.00 m		124.0026	1034
120	Guide spiral liner insulated; 2.0/4.5; red; for wire \varnothing 1.0 - 1.2; for 4.00 m		124.0031	1034
120	Guide spiral liner insulated; 2.0/4.5; red; for wire \varnothing 1.0 - 1.2; for 5.00 m		124.0035	1034
130	PTFE core liner 1.5/4.0; blue; wire electrode \varnothing 0.8 - 1.0; for 3.00 m		126.0005	1034
130	PTFE core liner 1.5/4.0; blue; wire electrode \varnothing 0.8 - 1.0; for 4.00 m		126.0008	1034
130	PTFE core liner 1.5/4.0; blue; wire electrode \varnothing 0.8 - 1.0; for 5.00 m		126.0011	1034
130	PTFE carbon core liner 1.5/4.0; wire electrode \varnothing 0.8 - 1.0; for 3.00 m		127.0002	1034
130	PTFE carbon core liner 1.5/4.0; wire electrode \varnothing 0.8 - 1.0; for 4.00 m		127.0003	1034
130	PTFE carbon core liner 1.5/4.0; wire electrode \varnothing 0.8 - 1.0; for 5.00 m		127.0004	1034
131	Nipple for core liner at \varnothing 4.0	20 Pcs.	131.0001	1095
132	O-Ring 3.5x1.5	20 Pcs.	165.0008	9010
133	Guide tube for core liners up to \varnothing 4.0 (200 mm)	10 Pcs.	129.0461	1095
200	Spanner Standard		191.0001	9010