

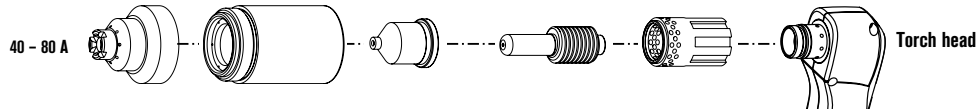
Hypertherm®

powermax1250™ G3 SERIES™

T80 hand torch consumables

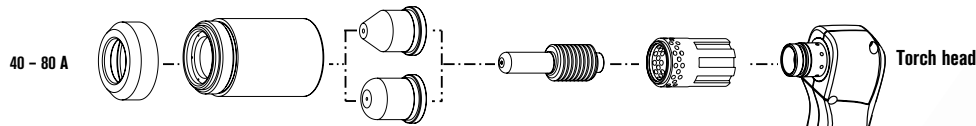


Shielded consumables



	Shield	Retaining cap	Nozzle	Electrode	Swirl ring
40 A	120929*	120928	120932*	120926*	120925
60 A	120929*	120928	120931*	120926*	120925
80 A	120929*	120928	120927*	120926*	120925

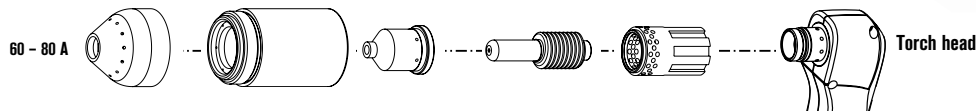
Unshielded** consumables



	Deflector	Retaining cap	Nozzle	Electrode	Swirl ring
40 A	120979	120928	220006	120926*	120925
60 A	120979	120928	220007	120926*	120925
80 A	120979	120928	120980	120926*	120925

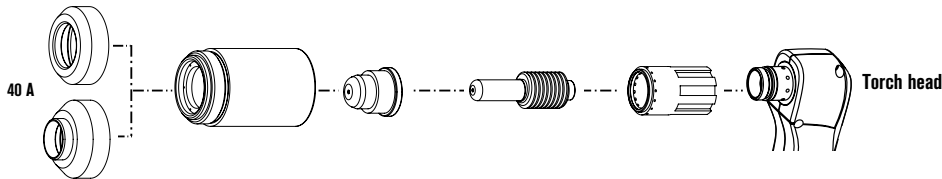


Gouging consumables



	Shield	Retaining cap	Nozzle	Electrode	Swirl ring
60 - 80 A	120977	120928	220059	120926*	120925

FineCut consumables



	Deflector	Retaining cap	Nozzle	Electrode	Swirl ring
40 A	120979	120928	220329	120926*	220327
40 A CE***	220325	120928	220329	120926*	220327



For improved performance, retrofit with a Duramax HRT (see page 83).

All-in-one and FineCut kits available. Visit www.hypertherm.com/consumablekits or see pages 87 - 88 for options.

* Consumables available in multiple packaging options, see page 87 for bulk package information.

** In countries following CE standards, unshielded consumables may only be used in mechanized torch applications.

*** CE shield for use in countries requiring CE, CCC, GOST marks.

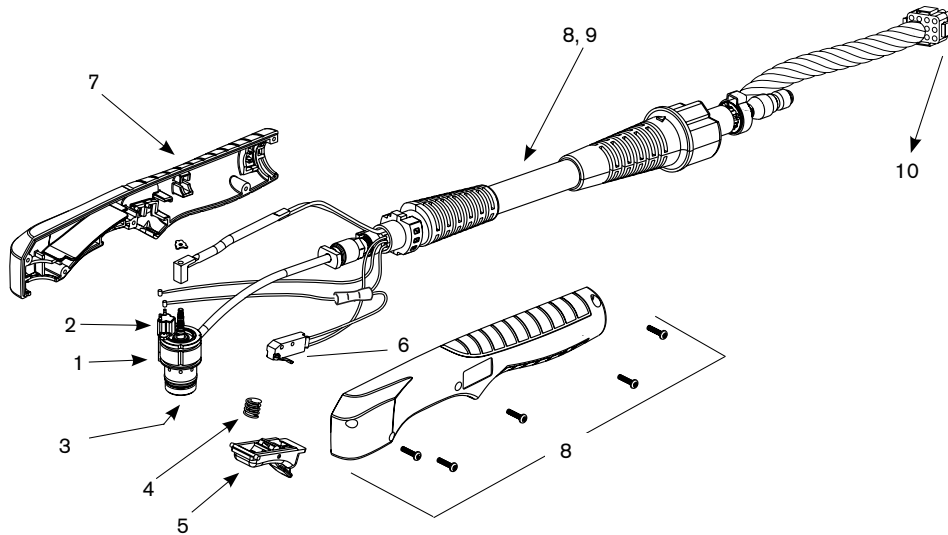
TECHNOLOGIES

FineCut®
Coaxial-assist™ jet
Vented shield
Spiral groove
HyLife®

Hypertherm, Powermax, FineCut, Coaxial-assist and HyLife are trademarks of Hypertherm, Inc. and may be registered in the United States and/or other countries.

powermax1250[®]

T80 hand torch assembly



Assembly

Part number	Description
087001*	T80 hand torch assembly with 25' (7.6 m) leads
087002*	T80 hand torch assembly with 50' (15.2 m) leads
087047*	T80 hand torch assembly with 75' (22.9 m) leads
059309*	Test torch with 6' (1.8 m) leads
1. 128564	Kit: T60/T80 torch main body replacement (does not include cap sensor)
2. 128639	Kit: Cap sensor switch replacement
075571	Cap-off sensor screws
3. 128521	Kit: T60/T80, T60M/T80M torch head repair (does not include head)
4. 027254	Trigger spring
5. 002244	Safety trigger assembly
6. 128642	Kit: T60/T80 start switch replacement
7. 128644	Kit: T60/T80 torch handle replacement
8. 128636	Kit: T80 lead replacement, 50' (15.2 m)
9. 128637	Kit: T80 lead replacement, 25' (7.6 m)
10. 128638	Kit: ETR connector repair (regional repair centers only)
123106	Work lead with clamp, 20' (6.1 m)
128718	Work lead with clamp, 50' (15.2 m)

*Assembly includes consumables



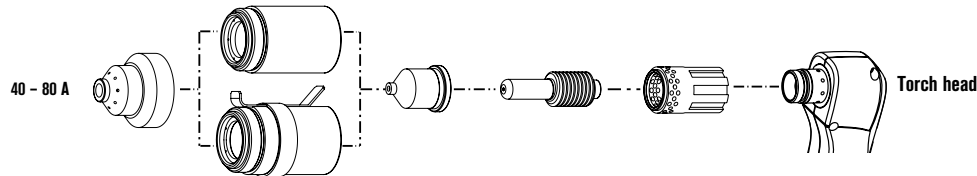
Hypertherm®

powermax1250™ G3 SERIES™

T80M machine torch consumables

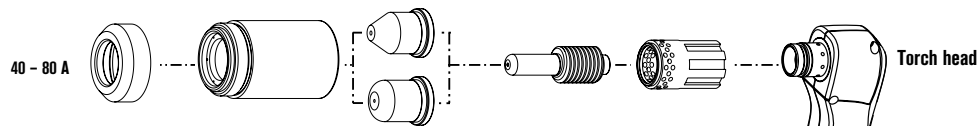


Shielded consumables



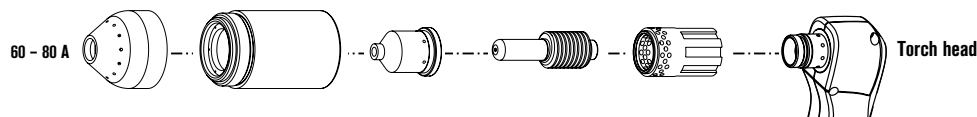
	Shield	Retaining cap	Nozzle	Electrode	Swirl ring
40 A	120930*	120928	120932*	120926*	120925
60 A	120930*	120928	120931*	120926*	120925
80 A	120930*	120928	120927*	120926*	120925
Ohmic		220061			

Unshielded consumables



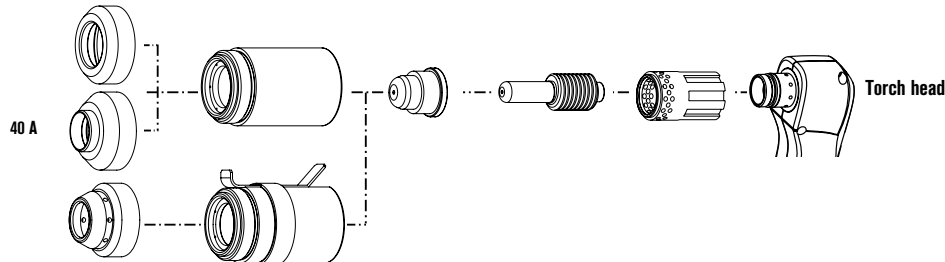
	Deflector	Retaining cap	Nozzle	Electrode	Swirl ring
40 A	120979	120928	220006	120926*	120925
60 A	120979	120928	220007	120926*	120925
80 A	120979	120928	120980	120926*	120925

Gouging consumables



	Shield	Retaining cap	Nozzle	Electrode	Swirl ring
60 - 80 A	120977	120928	220059	120926*	120925

FineCut consumables



	Shield / Deflector	Retaining cap	Nozzle	Electrode	Swirl ring
40 A	120979	120928	220329	120926*	120925
40 A CE	220325	120928	220329	120926*	120925
Ohmic	220404	220061			

* Consumables available in multiple packaging options, see page 87 for bulk package information.



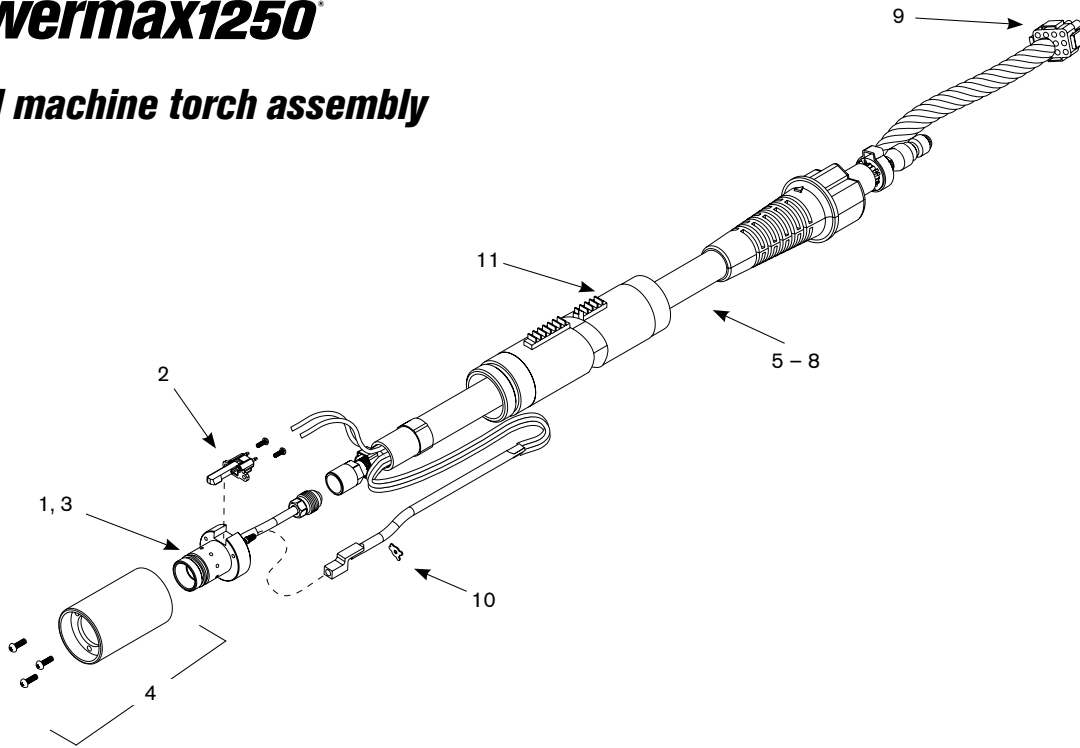
TECHNOLOGIES

FineCut®
Coaxial-assist™ jet
Vented shield
Spiral groove
HyLife®

Hypertherm, Powermax, FineCut, Coaxial-assist and HyLife are trademarks of Hypertherm, Inc. and may be registered in the United States and/or other countries.

powermax1250[®]

T80M machine torch assembly



Assembly

Part number	Description
087003*	T80M machine torch assembly with 15' (4.6 m) leads
087004*	T80M machine torch assembly with 25' (7.6 m) leads
087005*	T80M machine torch assembly with 35' (10.7 m) leads
087006*	T80M machine torch assembly with 50' (15.2 m) leads
087048*	T80M machine torch assembly with 75' (22.9 m) leads
059309*	Test torch with 6' (1.8 m) leads
128645	Kit: Torch mounting
1. 128640	Kit: T60M/T80M torch main body replacement (does not include cap sensor)
2. 128639	Kit: Cap sensor switch replacement
075571	Cap-off sensor screws
3. 128521	Kit: T60/T80, T60M/T80M torch head repair (does not include head)
4. 128643	Kit: T60M/T80M mounting sleeve replacement
5. 128634	Kit: T60M/T80M lead replacement, 15' (4.6 m)
6. 128633	Kit: T60M/T80M lead replacement, 25' (7.6 m)
7. 128635	Kit: T60M/T80M lead replacement, 35' (10.7 m)
8. 128641	Kit: T60M/T80M lead replacement, 50' (15.2 m)
9. 128638	Kit: ETR connector repair (regional repair centers only)
10. 027889	Retaining clip
11. 128710	Kit: T60/T80M positioning sleeve replacement
128650	On/Off pendant for machine torch, 25' (7.6 m)
128651	On/Off pendant for machine torch, 50' (15.2 m)
128652	On/Off pendant for machine torch, 75' (22.9 m)
123106	Work lead with clamp, 20' (6.1 m)
128145	Work lead with clamp, 50' (15.2 m)
128718	Work lead with clamp, 50' (15.2 m)

*Assembly includes consumables

