



## MIG/MAG Welding Torches **ABIMIG® A T LW** air cooled

**“Super lightweight torches with turnable and changeable torch neck”**

The super lightweight MIG/MAG welding torch series “ABIMIG® A T LW” with ergonomic and universal two-component handle offer flexibility in perfection. They are equipped standard with ball joint, lightweight “Bikox® LW” cable assembly and exchangeable and 360° rotatable torch neck, so the torches enable ergonomic and relaxed welding in every position.

- Super lightweight “Bikox® LW” cable assembly – reduction of the torch weight up to 50 %
- Ergonomic handle, optionally available with Up/Down module – Improved working comfort
- Universal contact tip holder (contact tip holder, gas diff user and gas nozzle holder all in one) – reduction of the number of spare parts and thus the costs
- Screwable, thermally insulated gas nozzle – longer service life of the torch and cost reduction
- Turnable, quick-change torch neck – increased working comfort and reduction of service costs



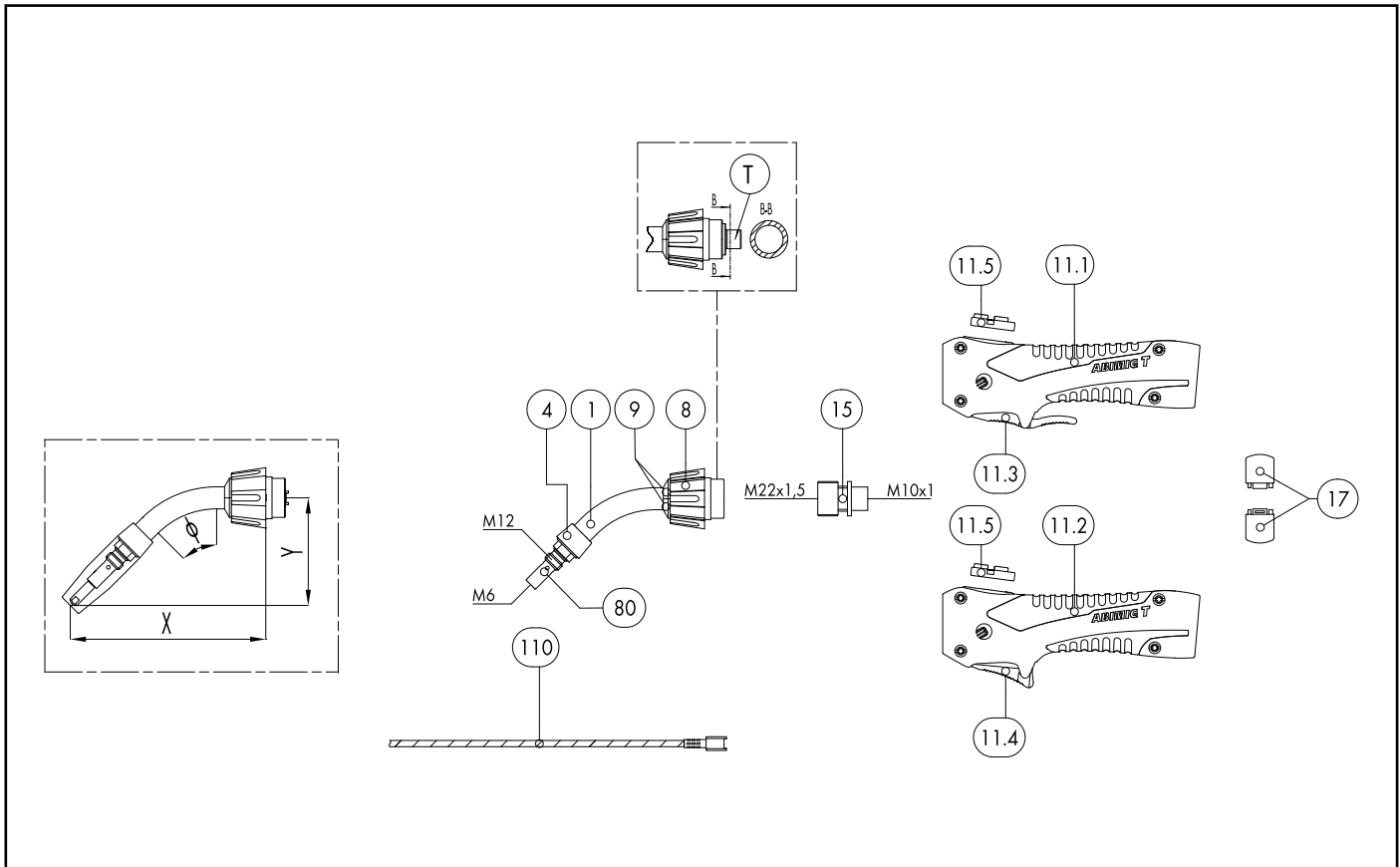
### Technical data (EN 60 974-7)

### MIG/MAG Welding Torches “ABIMIG® A T LW” (air cooled)

Type	CO <sub>2</sub>	Rating (A) Mixed gases M21	Duty cycle (%)	Wire size (mm)
<b>ABIMIG® A T 155 LW</b>	190	180	60	0.8-1.0
<b>ABIMIG® A T 255 LW</b>	240	220	60	0.8-1.2
<b>ABIMIG® A T 305 LW</b>	290	260	60	0.8-1.2
<b>ABIMIG® A T 355 LW</b>	340	320	60	1.0-1.6
<b>ABIMIG® A T 405 LW</b>	400	370	60	1.0-1.6

Subject to change without notice.

# MIG/MAG Welding Torches ABIMIG® A T 155 LW



## Pos. Description

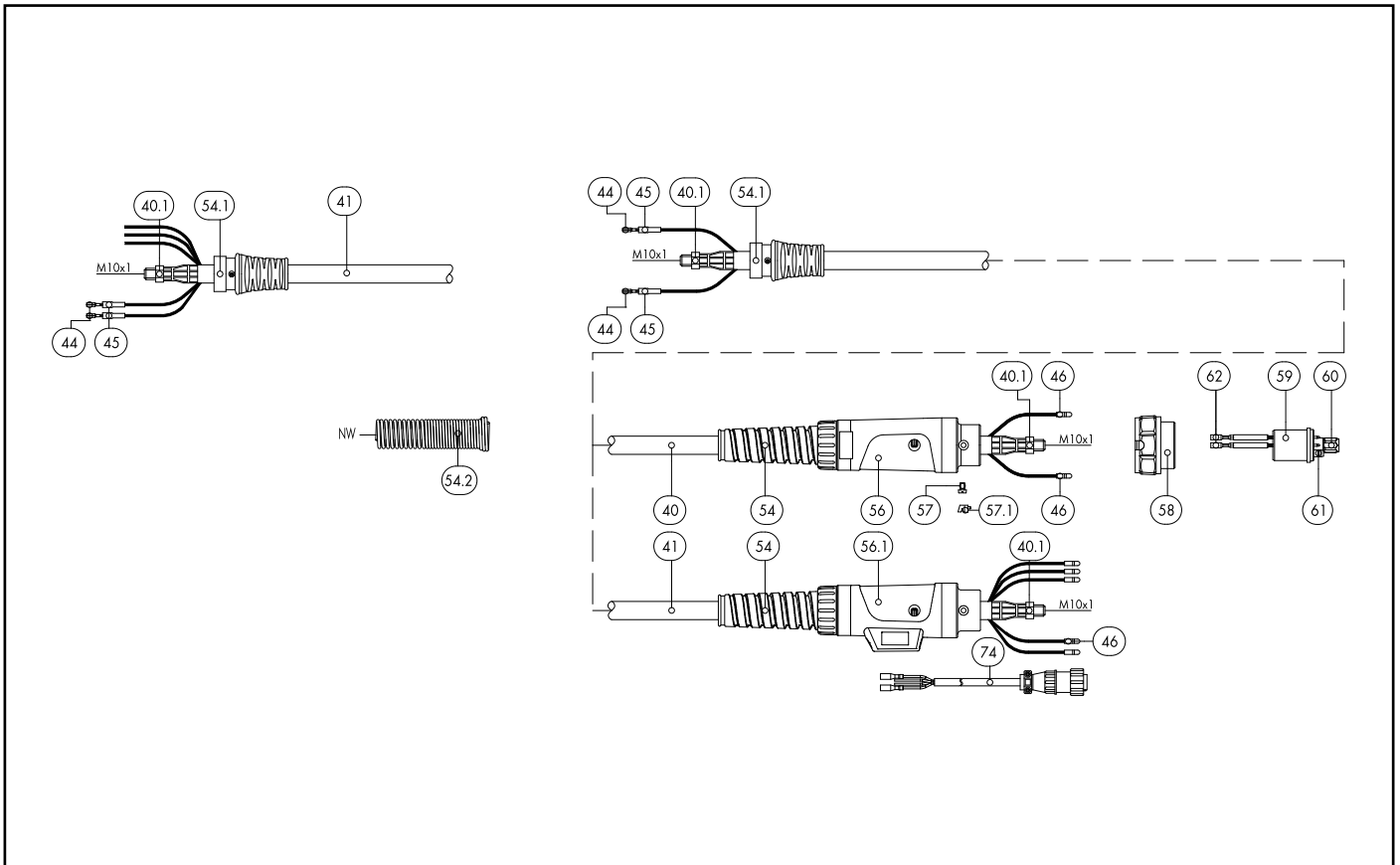
## Units

## Part-No.

## Product-group

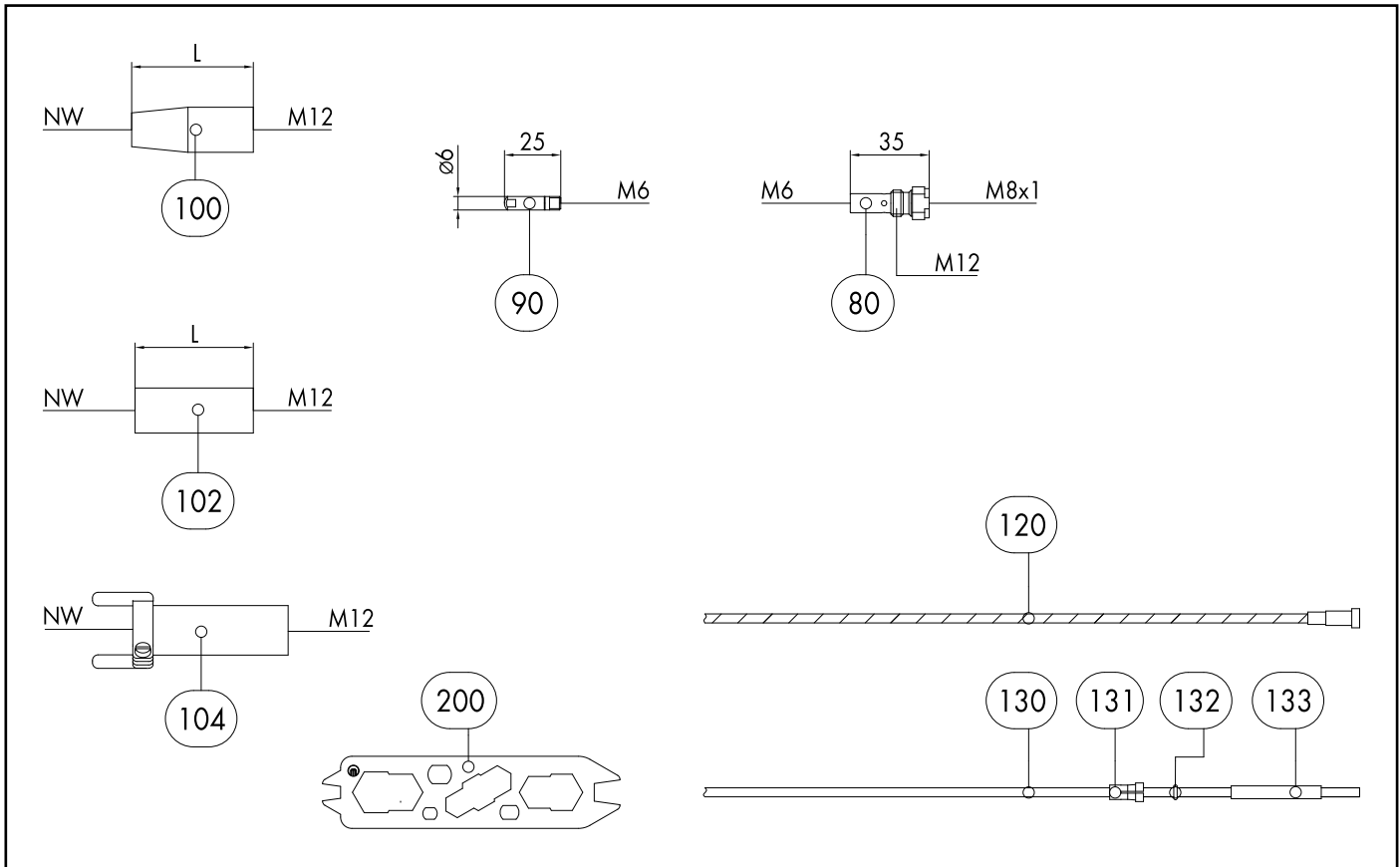
Pos.	Description	Units	Part-No.	Product-group
<b>Basic torch (complete)</b>				
	ABIMIG® A T 155 LW; T45°; central adaptor KZ-2; 3.00 m		006.D810.1	1323
	ABIMIG® A T 155 LW; T45°; central adaptor KZ-2; 4.00 m		006.D811.1	1323
	ABIMIG® A T 155 LW; T45°; central adaptor KZ-2; 5.00 m		006.D812.1	1323
<b>Combi torch (basic torch without neck and wear parts)</b>				
	ABIMIG® A T G 155 LW; central adaptor KZ-2; 3.00 m		006.D841.1	1325
	ABIMIG® A T G 155 LW; central adaptor KZ-2; 4.00 m		006.D842.1	1325
	ABIMIG® A T G 155 LW; central adaptor KZ-2; 5.00 m		006.D843.1	1325
<b>Swan neck</b>				
1	Swan neck ABIMIG® A 155 LW; 45° bent		006.D804.1	1306
1	Swan neck ABIMIG® A T 155 K T; 45°; X=105, Y=55; M6; gas nozzle screwed		006.D848.1	1306
1	Swan neck ABIMIG® A T 155 T8 FLEX; X=248; M6; gas nozzle screwed		006.D802.1	1306
1	COMBI swan neck A T 155 K T cpl.; 45°; X=105, Y=55; M6; gas nozzle screwed		006.0131.1	1306
1	COMBI swan neck A T 155 T cpl.; 45°; X=125, Y=70; M6; gas nozzle screwed		006.0132.1	1306
1	COMBI swan neck A T 155 T8 FLEX cpl.; X=248; M6; gas nozzle screwed		006.0133.1	1306
4	Spacer	5 Pcs.	767.D607.5	1595
8	Coupling nut M22x1.5		014.H279.1	1595
9	Protection cap (split) D=14 for round-neck nut	10 Pcs.	014.H281.10	1595
<b>Handle</b>				
11.1	Handle ABIMIG® A T with push-button long		180.D077.1	1595
11.1	Handle ABIMIG® A T with push-button long (without module BIS-52)		180.D079.1	1595
11.2	Handle ABIMIG® A T with push-button short		180.D078.1	1595
11.2	Handle ABIMIG® A T with push-button short (without module BIS-52)		180.D080.1	1595
11.3	Trigger long 2-pole		185.D118.1	1595
11.4	Trigger short 2-pole		185.D120.1	1595
11.5	Blind cover		400.D573.1	1595

# MIG/MAG Welding Torches ABIMIG® A T 155 LW



Pos.	Description	Units	Part-No.	Product-group
15	Torch pipe connection M22x1.5 / M10x1		014.H354.1	1595
17	Half rings (1 pair)	2 Pcs.	400.D561.2	1595
<b>Cable assembly</b>				
40	Bikox® LW power cable, R4 for 3.00 m		160.H025.1	1511
40	Bikox® LW power cable, R4 for 4.00 m		160.H026.1	1511
40	Bikox® LW cable assembly, R4 2-pole for 4.50 m		160.H380.1	1511
40	Bikox® LW power cable, R4 for 5.00 m		160.H027.1	1511
40	Bikox® LW cable assembly, R4 2-pole for 6.00 m		160.H430.1	1511
40	Bikox® LW cable assembly, R4 2-pole Up/Down for 3.00 m		160.H365.1	1511
40	Bikox® LW cable assembly, R4 2-pole Up/Down for 4.00 m		160.H366.1	1511
40	Bikox® LW cable assembly, R4 2-pole Up/Down for 4.50 m		160.H431.1	1511
40	Bikox® LW cable assembly, R4 2-pole Up/Down for 5.00 m		160.H367.1	1511
40	Bikox® LW cable assembly, R4 2-pole Up/Down for 6.00 m		160.H432.1	1511
40.1	Hexagon nut M10x1	10 Pcs.	001.0009	9010
44	Trigger wire connector	20 Pcs.	175.0022	9010
45	Insulating sleeve	20 Pcs.	400.0119	1095
46	Plug	20 Pcs.	175.0004	9010
54	Cable support ND 19		400.1010	1095
54.1	Cable support spring ND 21		400.D205	1595
54.1	Cable support ABIMIG® A T LW (short)		400.D574.1	1595
56	Cable support machine side		501.2248	9010
56.1	Connection housing machine side cpl.; for UNI-plug		501.D578.1	1595
57	Pan head screw M4x6	20 Pcs.	000.0552	9010
57.1	Screw cap 1	20 Pcs.	500.0251	9010
58	Adaptor nut M33x2		500.0213	9010
59	Central adaptor KZ-2		501.0003	1095

# MIG/MAG Welding Torches ABIMIG® A T 155 LW



Pos.	Description	Units	Part-No.	Product-group
60	Coupling nut M10x1, plastic	5 Pcs.	501.D536.5	1595
61	O-Ring 4x1	20 Pcs.	165.0002	9010
62	Trigger wire connector; female	20 Pcs.	175.0003	9010
74	Control cable with 4-pole Amphenol plug L=400 mm		175.D098	1595
74.1	Protective tube 4.5x0.5, L=60 mm		110.D023	1595
<b>Wear parts</b>				
80	Contact tip holder M12/M6/35 US	5 Pcs.	006.D719.5	1533
90	Contact tip M6 E-Cu; Ø 0.6 (6x25)	10 Pcs.	140.0008	1030
90	Contact tip M6 E-Cu; Ø 0.8 (6x25)	10 Pcs.	140.0059	1030
90	Contact tip M6 E-Cu; Ø 1.0 (6x25)	10 Pcs.	140.0253	1030
90	Contact tip M6 CuCrZr; Ø 0.6 (6x25)	10 Pcs.	140.0855	1031
90	Contact tip M6 CuCrZr; Ø 0.8 (6x25)	10 Pcs.	140.0062	1031
90	Contact tip M6 CuCrZr; Ø 1.0 (6x25)	10 Pcs.	140.0256	1031
90	Contact tip M6 E-Cu; Ø 0.8 for alu wire (6x25)	10 Pcs.	141.0002	1030
90	Contact tip M6 E-Cu; Ø 1.0 for alu wire (6x25)	10 Pcs.	141.0007	1030
90	Contact tip M6 CuCrZr silver-plated; Ø 0.8 (6x25)	10 Pcs.	147.0062	1031
90	Contact tip M6 CuCrZr silver-plated; Ø 1.0 (6x25)	10 Pcs.	147.0256	1031
100	Gas nozzle M12; ND 12; galvanized; conical L=52 mm	5 Pcs.	145.D001	1536
100	Gas nozzle M12; NW 10; galvanized; conical L=50 mm	5 Pcs.	145.D002	1536
100	Gas nozzle M12; NW 10; galvanized; conical L=52 mm	5 Pcs.	145.D006	1536
100	Gas nozzle M12; ND 12; galvanized; conical L=54 mm	5 Pcs.	145.D004	1536
102	Gas nozzle M12; ND 17; galvanized; cylindrical L=52 mm	5 Pcs.	145.D003	1536
102	Gas nozzle M12; ND 12 blank; conical with extended insulation L=52 mm	5 Pcs.	145.D205	1536
104	Spot weld gas nozzle M12; NW 17; galvanized; L=67 mm	5 Pcs.	145.D009	1536
110	Neck liner 1.5; for wire Ø 0.6 - 1.0; for ABIMIG® T-Line		122.D037	1534
110	Neck liner 1.6; brass; for wire Ø 0.6 - 1.0; for ABIMIG® T-Line		122.D040	1534

