

GRUPA PROJEKTOWO PRODUKCYJNO HANDLOWA



GPPH PRODUCTS

GET THE ADVANTAGE
OF GPPH PRODUCTS
BY MAKING PRECISE
CONSTRUCTIONS IN
A MUCH SHORTER TIME!

BY GPPH

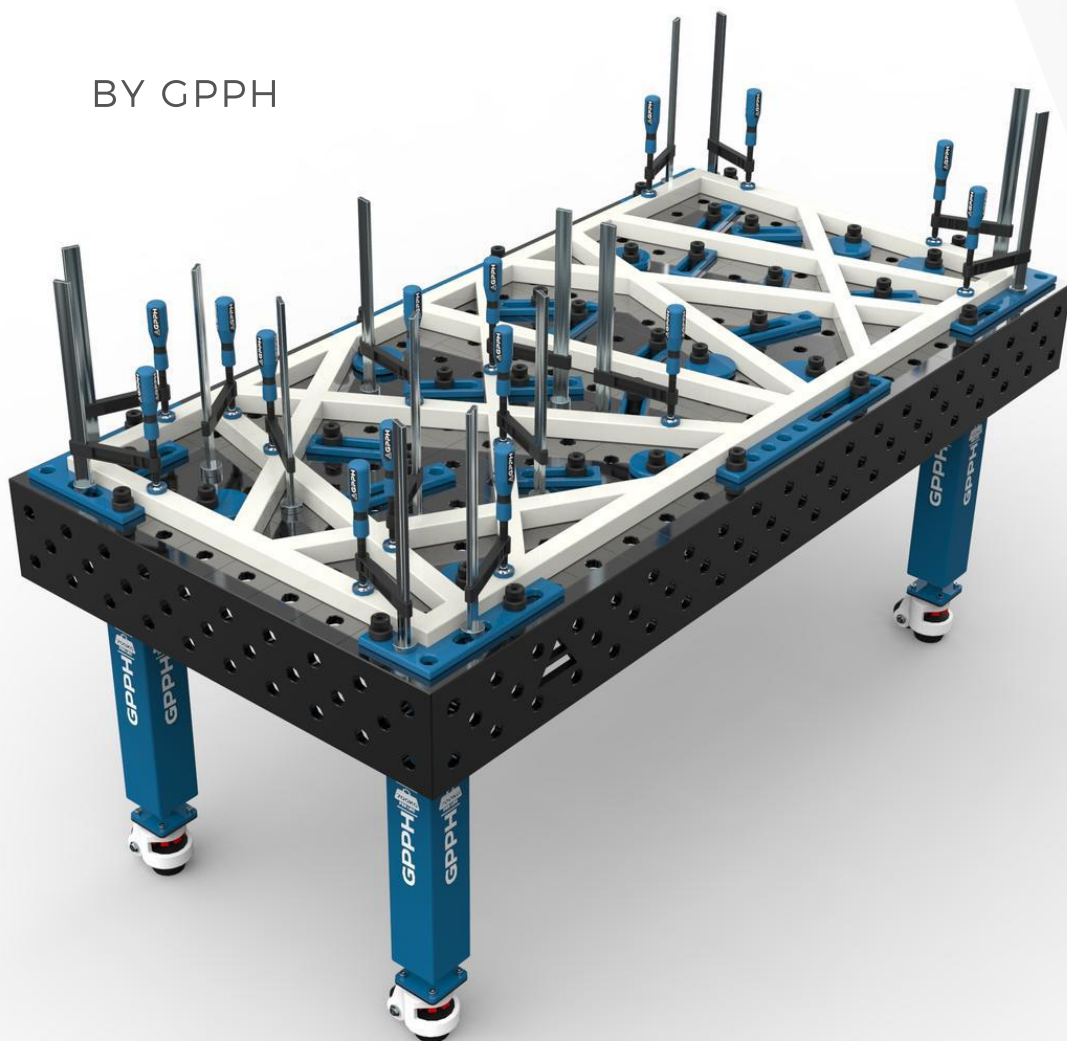
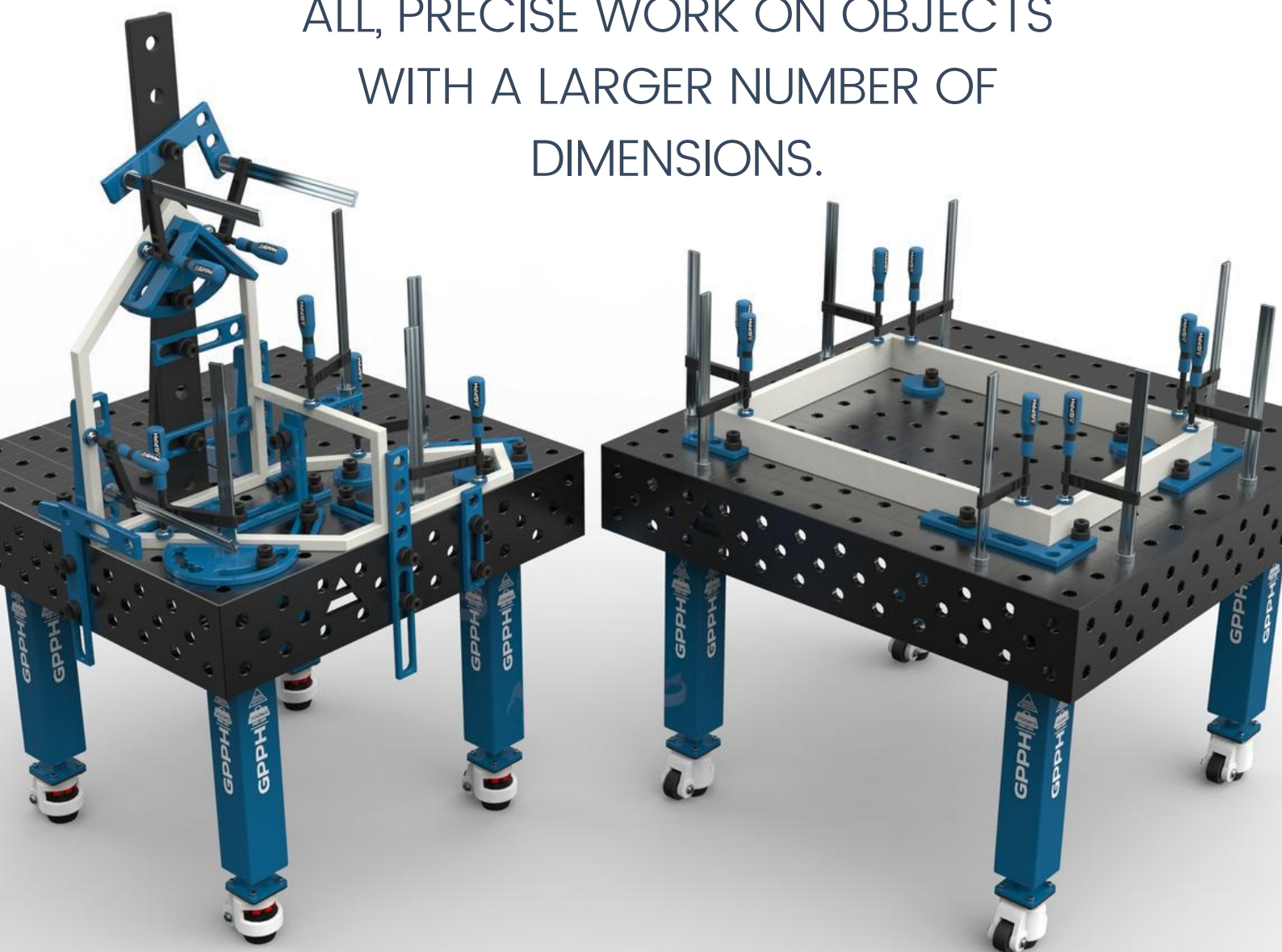


TABLE OF CONTENTS

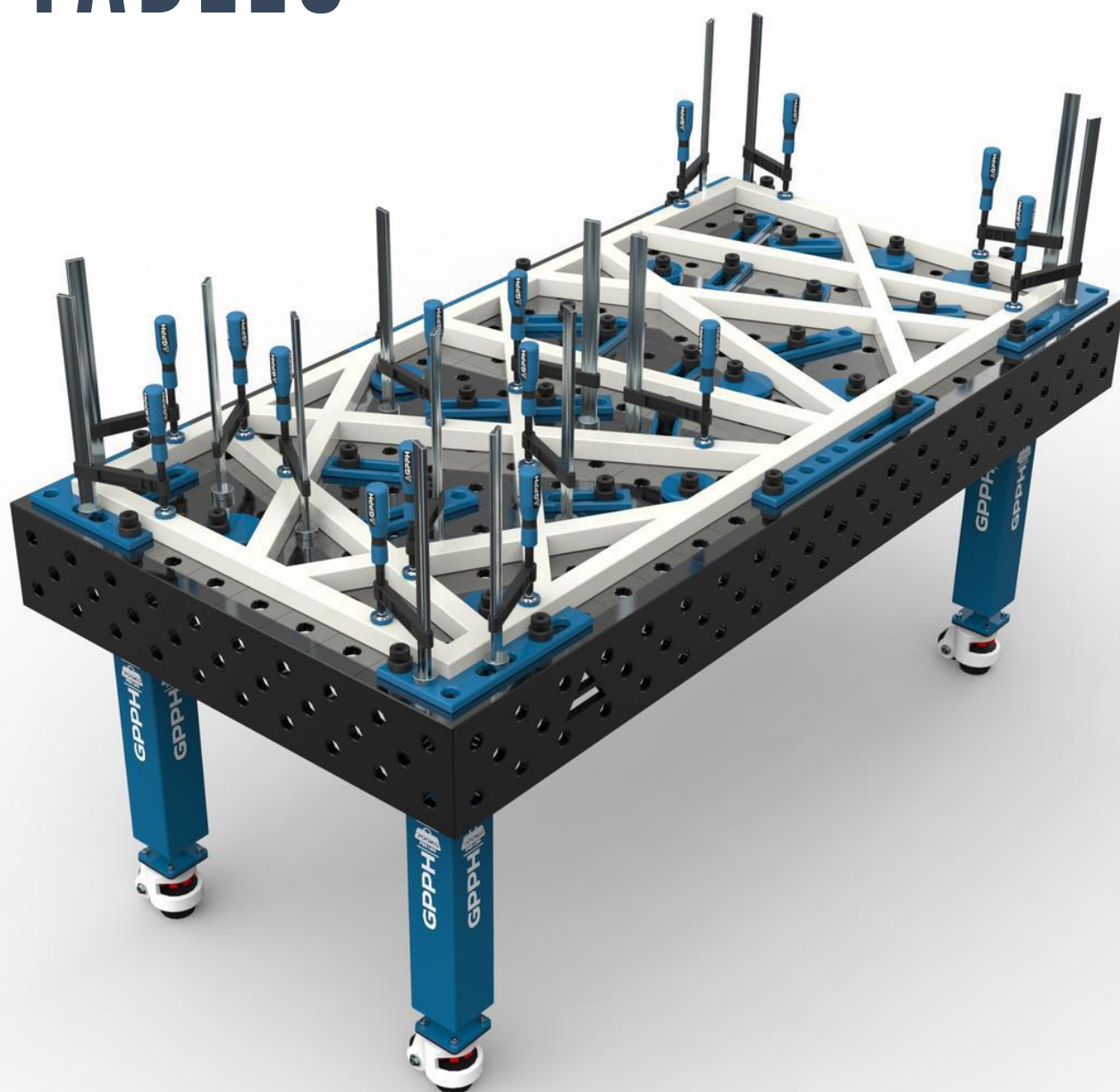
1. Traditional Welding Tables PRO	4
◦ Technical parameters	5
◦ Dimensions of Traditional Welding Tables PRO	6
2. Tooling for Traditional Welding Tables PRO	11
3. Toolkit proposal PRO	15
◦ Toolkit PRO no. 1	16
◦ Toolkit PRO no. 2	17
◦ Toolkit PRO no. 3	18
◦ Toolkit PRO no. 4	19
4. Traditional Welding Tables PLUS	20
◦ Technical parameters	21
◦ Dimensions of Traditional Welding Tables PLUS	22
5. Tooling for Traditional Welding Tables PLUS	27
6. Toolkit proposal PLUS	31
◦ Toolkit PLUS no. 1	32
◦ Toolkit PLUS no. 2	33
◦ Toolkit PLUS no. 3	34
◦ Toolkit PLUS no. 4	35
7. Traditional Welding Tables ECO	36
◦ Technical parameters	37
◦ Dimensions of Traditional Welding Tables ECO	38
8. Tooling for Traditional Welding Tables ECO	40
9. Toolkit proposal ECO	44
◦ Toolkit ECO no. 1	45
◦ Toolkit ECO no. 2	46
◦ Toolkit ECO no. 3	47
◦ Toolkit ECO no. 4	48
10. Additional equipment for Traditional Welding Tables GPPH	49
◦ Tools and portable tooling shelves	50
◦ Leg with wheel and adjustable support	54
◦ GPPH Tool Trolley	55
11. GPPH Rotary Welding Positioner	56
◦ Technical parameters	59
◦ Standard equipment	60

WORK SMARTER, NOT HARDER

WELDING TABLE PROVIDES FAST AND ERROR-FREE OPTIONS FOR MACHINING A SIMPLE 2D-CONSTRUCTION (E.G. BUILDING OF RAILINGS), BUT ABOVE ALL, PRECISE WORK ON OBJECTS WITH A LARGER NUMBER OF DIMENSIONS.

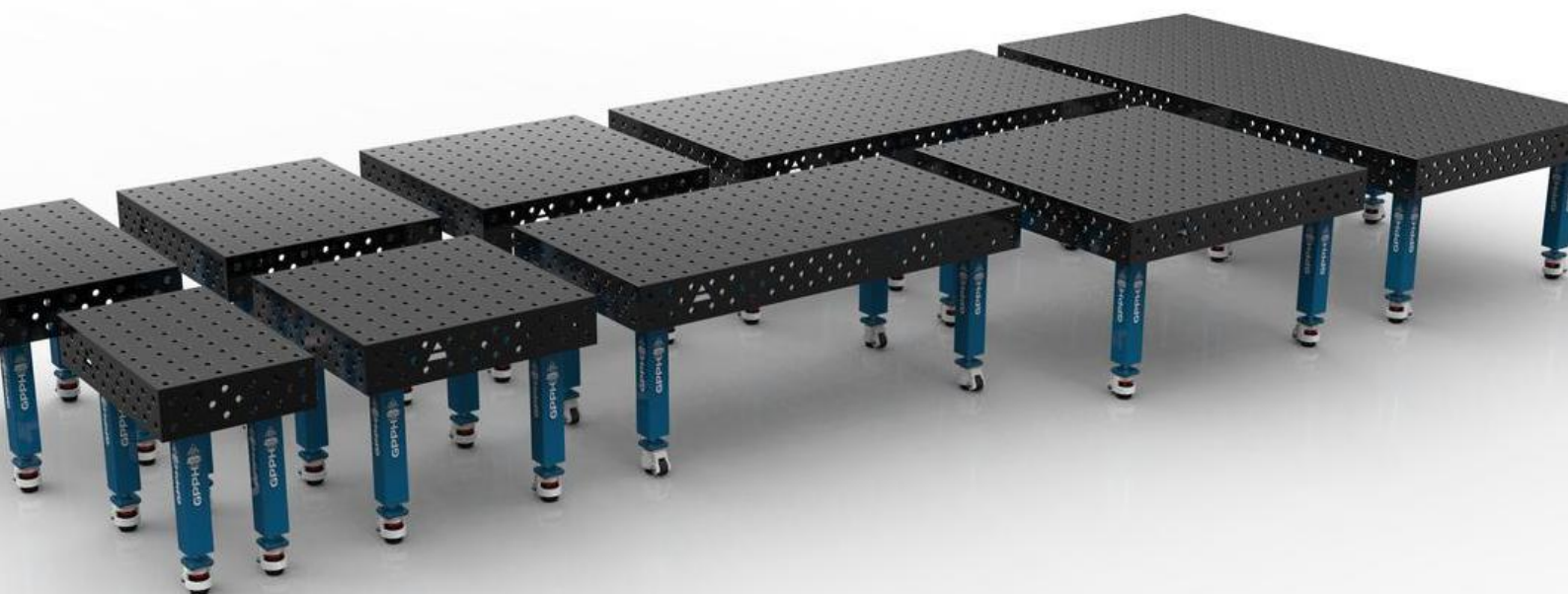


GPPH TRADITIONAL WELDING TABLES^{PRO}



TECHNICAL PARAMETERS

- Stable and massive construction
- The highest quality of workmanship
- Perfect flatness of the table [+ / - 0,5mm]
- Made of S355J2+N
- Thickness 15mm
- Holes of system $\varnothing 16$ or $\varnothing 28$ in the grid 100x100
- Three grids of holes on the 4 sides
- Chamfered holes for easy tool assembly
- Engraved scale in the grid 100x100mm
- Table legs made of profile 100x100mm
- Height adjustment of the table with standard legs approx. 880–930mm
- Possibility of using stainless steel covers
- Tables can be combined freely to extend a working surface
- All tables are reinforced with ribs
- Produced with standard ISO 2768–1



DIMENSIONS OF TRADITIONAL WELDING TABLES^{PRO}



GPPH TRADITIONAL WELDING TABLE^{PRO} TWT.PRO.300148

- dimension: 3000x1480mm
- side plate: 200mm
- capacity: 5 600 kg
- number of legs: 8



GPPH TRADITIONAL WELDING TABLE^{PRO} TWT.PRO.240120

- dimension: 2400x1200mm
- side plate: 200mm
- capacity: 4 200 kg
- number of legs: 6



DIMENSIONS OF TRADITIONAL WELDING TABLES^{PRO}



GPPH TRADITIONAL WELDING TABLE^{PRO} TWT.PRO.200100

- dimension: 2000x1000mm
- side plate: 200mm
- capacity: 2 800 kg
- number of legs: 4



GPPH TRADITIONAL WELDING TABLE^{PRO} TWT.PRO.150148

- dimension: 1500x1480mm
- side plate: 200mm
- capacity: 2 800 kg
- number of legs: 4



DIMENSIONS OF TRADITIONAL WELDING TABLES^{PRO}



GPPH TRADITIONAL WELDING TABLE^{PRO} TWT.PRO.150100

- dimension: 1500x1000mm
- side plate: 200mm
- capacity: 2 800 kg
- number of legs: 4



GPPH TRADITIONAL WELDING TABLE^{PRO} TWT.PRO.120120

- dimension: 1200x1200mm
- side plate: 200mm
- capacity: 2 800 kg
- number of legs: 4



DIMENSIONS OF TRADITIONAL WELDING TABLES^{PRO}



GPPH TRADITIONAL WELDING TABLE^{PRO} TWT.PRO.120100

- dimension: 1200x1000mm
- side plate: 200mm
- capacity: 2 800 kg
- number of legs: 4



GPPH TRADITIONAL WELDING TABLE^{PRO} TWT.PRO.12080

- dimension: 1200x800mm
- side plate: 200mm
- capacity: 2 800 kg
- number of legs: 4



DIMENSIONS OF TRADITIONAL WELDING TABLES^{PRO}



GPPH TRADITIONAL WELDING TABLE^{PRO} TWT.PRO.100100

- dimension: 1000x1000mm
- side plate: 200mm
- capacity: 2 800 kg
- number of legs: 4

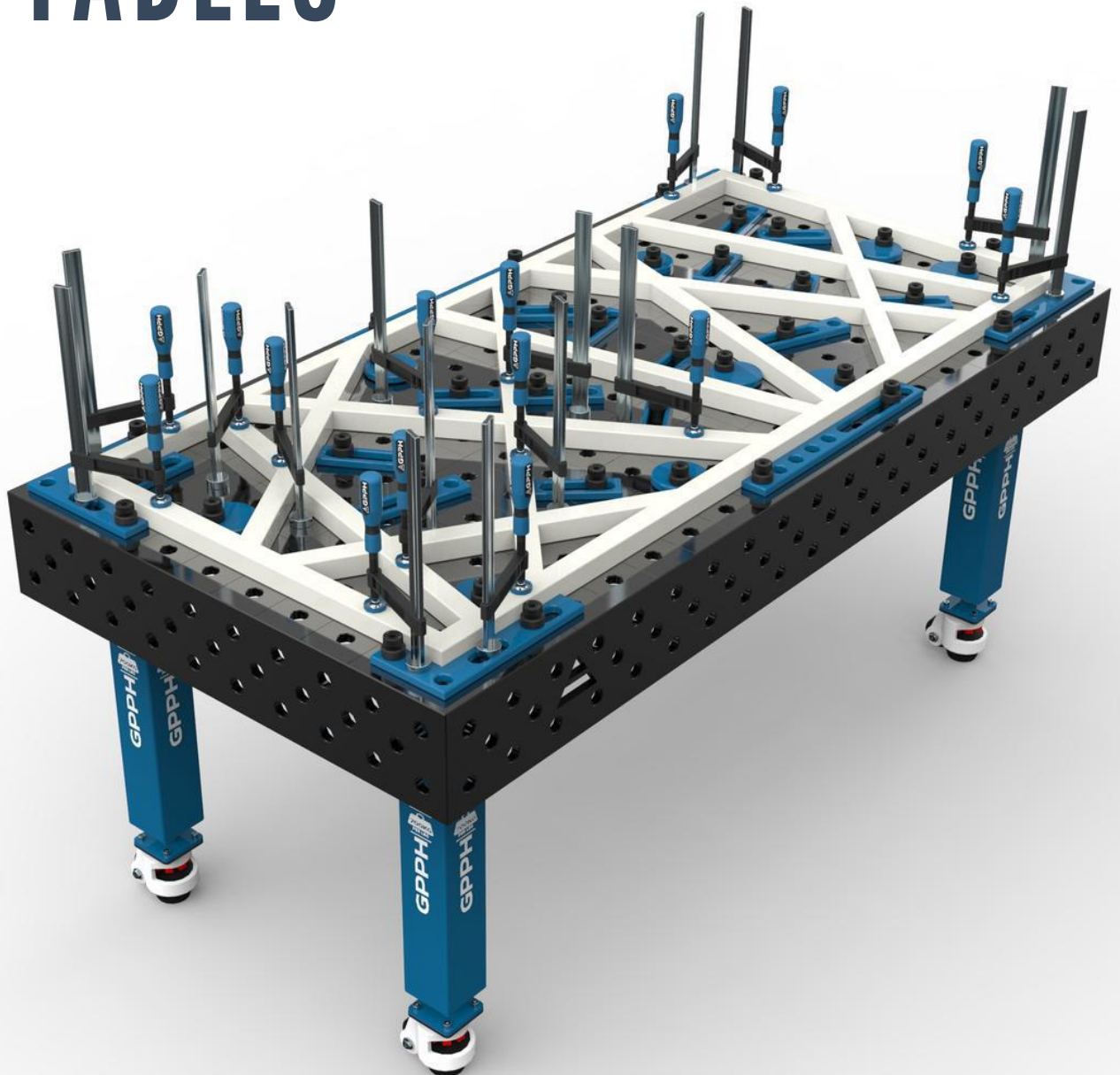


GPPH TRADITIONAL WELDING TABLE^{PRO} TWT.PRO.10060

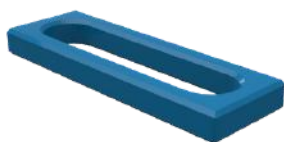
- dimension: 1000x600mm
- side plate: 200mm
- capacity: 2 800 kg
- number of legs: 4



TOOLING FOR TRADITIONAL WELDING TABLES^{PRO}



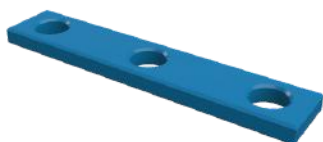
TOOLING FOR TRADITIONAL WELDING TABLES^{PRO}



STOP PRO 150
N.004PRO | Cat. No.



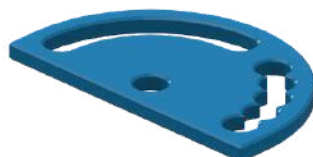
STOP PRO 225
N.005PRO | Cat. No.



STOP PRO 260
N.006PRO | Cat. No.



STOP PRO 500
N.007PRO | Cat. No.



PROTRACTOR PRO
N.008PRO | Cat. No.



**ANGLE PRECISION
SQUARE (FLAT)
PRO 275X150**
N.009PRO | Cat. No.



**ANGLE PRECISION
SQUARE (FLAT)
PRO 320X150**
N.010PRO | Cat. No.



**ANGLE PRECISION
SQUARE (FLAT)
PRO 350X250**
N.011PRO | Cat. No.



**ECCENTRIC STOP
PRO Ø100**
N.003PRO | Cat. No.



TOOLING FOR TRADITIONAL WELDING TABLES^{PRO}



**ANGLE BRACKET
PRO 185X175**
N.012PRO | Cat. No.



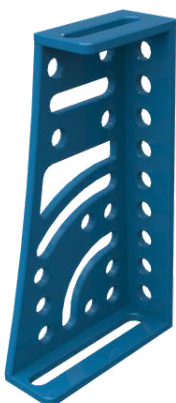
**ANGLE BRACKET
PRO 200X200**
N.0013PRO | Cat. No.



**ANGLE BRACKET
PRO 300X190**
N.014PRO | Cat. No.



**ANGLE BRACKET
PRO 450X250**
N.015PRO | Cat. No.



**ANGLE BRACKET PRO
275X500X175X100**
N.016PRO | Cat. No.



**FAST ASSEMBLY
BOLT 30 PRO**
N.002PRO | Cat. No.



MOUNTING PIN PRO
T.015PRO | Cat. No.



TOOLING FOR TRADITIONAL WELDING TABLES^{PRO}



TABLE EXTENSION PRO
1000X100
N.017PRO | Cat. No.

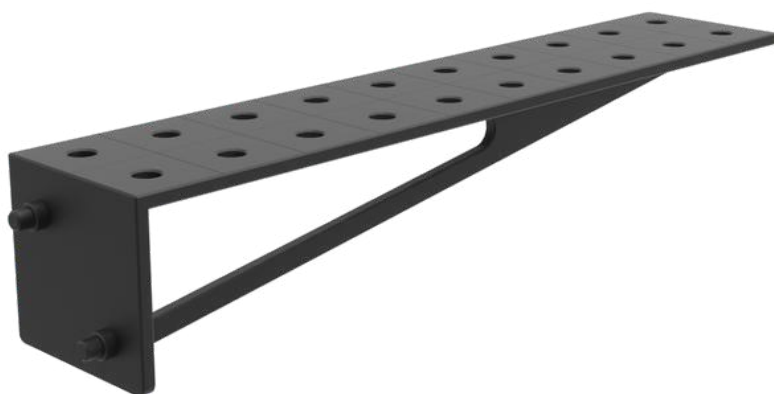


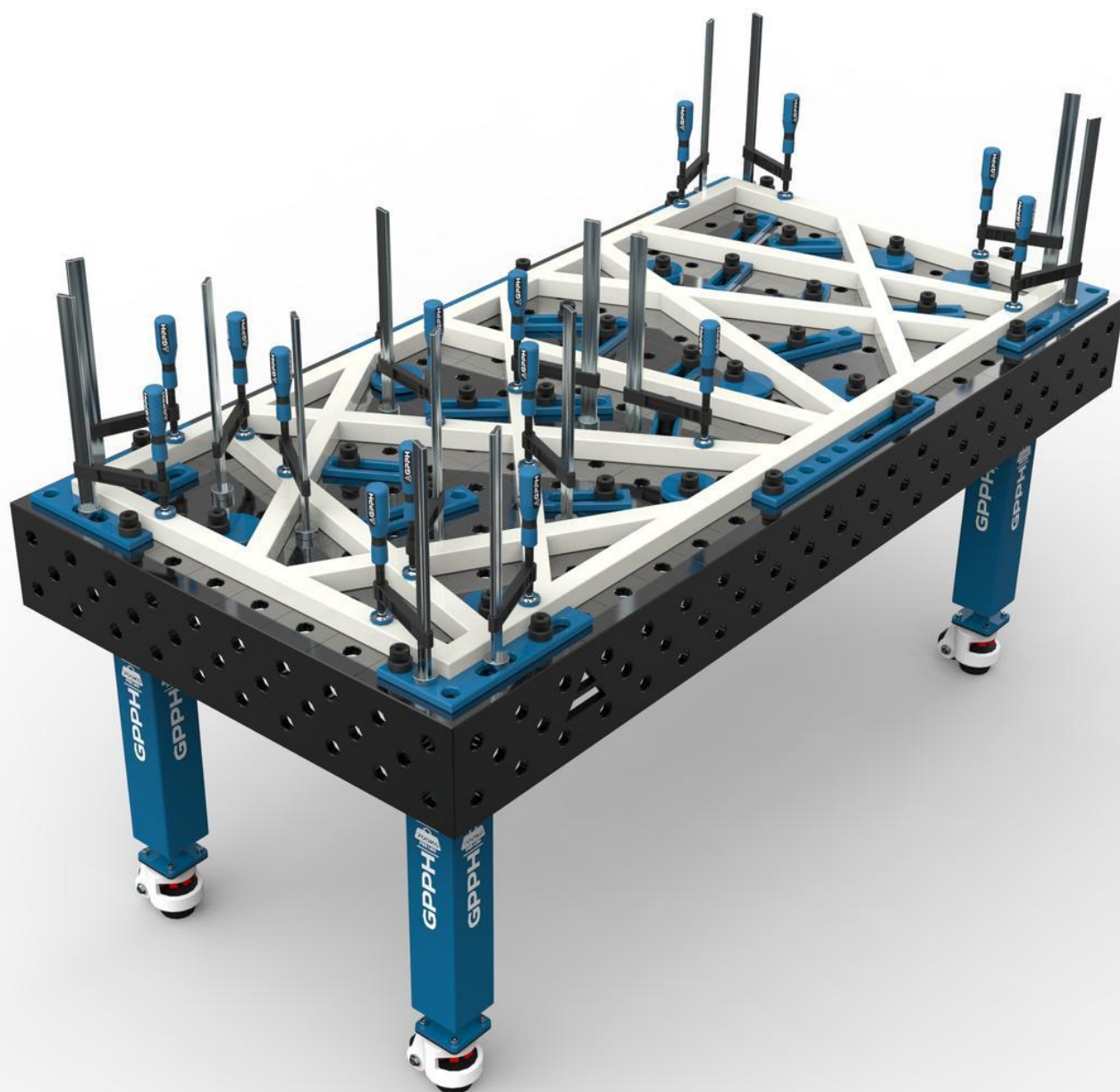
TABLE EXTENSION PRO
1000X200
N.018PRO | Cat. No.



WELDING CONNECTION
BLOCK PRO 1000X200X200
N.019PRO | Cat. No.



TOOLKIT PROPOSAL **PRO**



TOOLKIT^{PRO} NO. 1

Number of jigs & fixtures included in the kit: 146



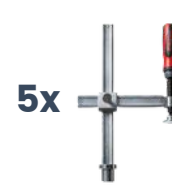
10x

FASTENING
CLAMP



10x

FASTENING
CLAMP
WITH LEVER



5x

VARIABLE THROAT
DEPTH CLAMP



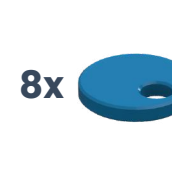
5x

VARIABLE THROAT
DEPTH WITH
LEVER CLAMP



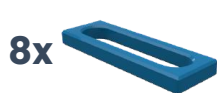
40x

FAST ASSEMBLY
BOLT 30 PRO



8x

ECCENTRIC
STOP PRO Ø100



8x

STOP PRO
150



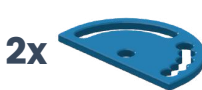
4x

STOP PRO
225



4x

STOP PRO
500



2x

PROTRACTOR
PRO



4x

ANGLE PRECISION
SQUARE (FLAT)
PRO 320X150



2x

ANGLE PRECISION
SQUARE (FLAT)
PRO 350X250



8x

ANGLE BRACKET
PRO 185X175



2x

ANGLE BRACKET
PRO 200X200



4x

ANGLE BRACKET
PRO 300X190



4x

ANGLE BRACKET
PRO 450X250



2x

ANGLE BRACKET PRO
270X500X175X100



2x

TABLE EXTENSION
PRO 1000X100



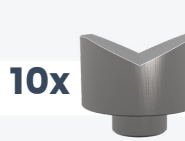
2x

TABLE EXTENSION
PRO 2000X100



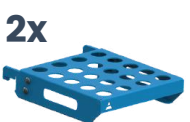
1x

WELDING TORCH
HANDLE



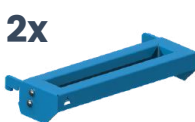
10x

PRISM
Ø58MM 130°



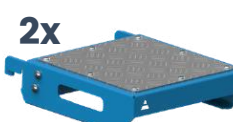
2x

FAST ASSEMBLY
BOLT SHELF M



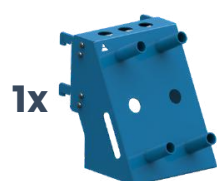
2x

CLAMP SHELF M



2x

FLAT SHELF M



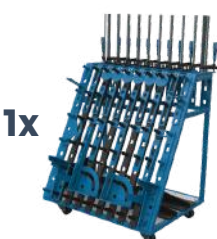
1x

MIX SHELF



1x

DOCUMENTATION
SHELF



1x

TOOL TROLLEY M /
TOOL TROLLEY L
(OPTIONS)

TOOLKIT^{PRO} NO. 2

Number of jigs & fixtures included in the kit: 93



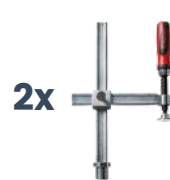
8x

FASTENING CLAMP



4x

FASTENING CLAMP WITH LEVER



2x

VARIABLE THROAT DEPTH CLAMP



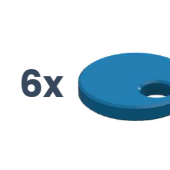
2x

VARIABLE THROAT DEPTH WITH LEVER CLAMP



30x

FAST ASSEMBLY BOLT 30 PRO



6x

ECCENTRIC STOP PRO Ø100



6x

STOP PRO 150



4x

STOP PRO 225



2x

STOP PRO 500



1x

PROTRACTOR PRO



4x

ANGLE PRECISION SQUARE (FLAT) PRO 320X150



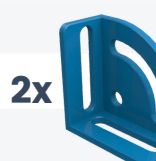
2x

ANGLE PRECISION SQUARE (FLAT) PRO 350X250



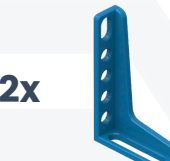
4x

ANGLE BRACKET PRO 185X175



2x

ANGLE BRACKET PRO 200X200



2x

ANGLE BRACKET PRO 300X190



2x

ANGLE BRACKET PRO 450X250



1x

TABLE EXTENSION PRO 1000X100



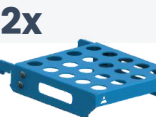
1x

TABLE EXTENSION PRO 2000X100



4x

PRISM Ø58MM 130°/90°



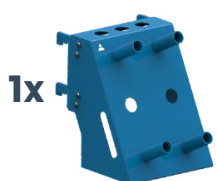
2x

FAST ASSEMBLY BOLT SHELF M



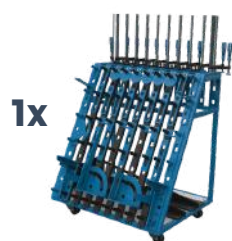
2x

CLAMP SHELF M



1x

MIX SHELF



1x

TOOL TROLLEY M / TOOL TROLLEY L (OPTIONS)

TOOLKIT^{PRO} NO. 3

Number of jigs & fixtures included in the kit: 58



8x

FASTENING
CLAMP



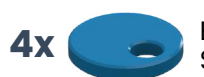
2x

FASTENING
CLAMP
WITH LEVER



18x

FAST ASSEMBLY
BOLT 30 PRO



4x

ECCENTRIC
STOP PRO Ø100



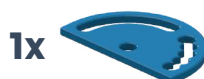
4x

STOP PRO
150



4x

STOP PRO
225



1x

PROTRACTOR
PRO



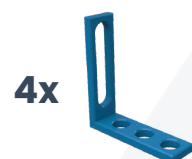
2x

ANGLE PRECISION
SQUARE (FLAT)
PRO 320X150



2x

ANGLE PRECISION
SQUARE (FLAT)
PRO 350X250



4x

ANGLE BRACKET
PRO 185X175



2x

ANGLE BRACKET
PRO 200X200



2x

ANGLE BRACKET
PRO 300X190



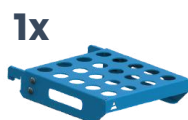
1x

ANGLE BRACKET
PRO 450X250



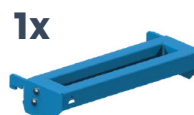
2x

PRISM Ø58MM
130°/90°



1x

FAST ASSEMBLY
BOLT SHELF M

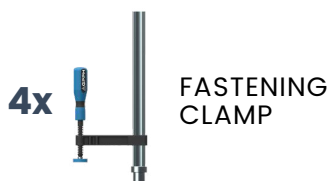


1x

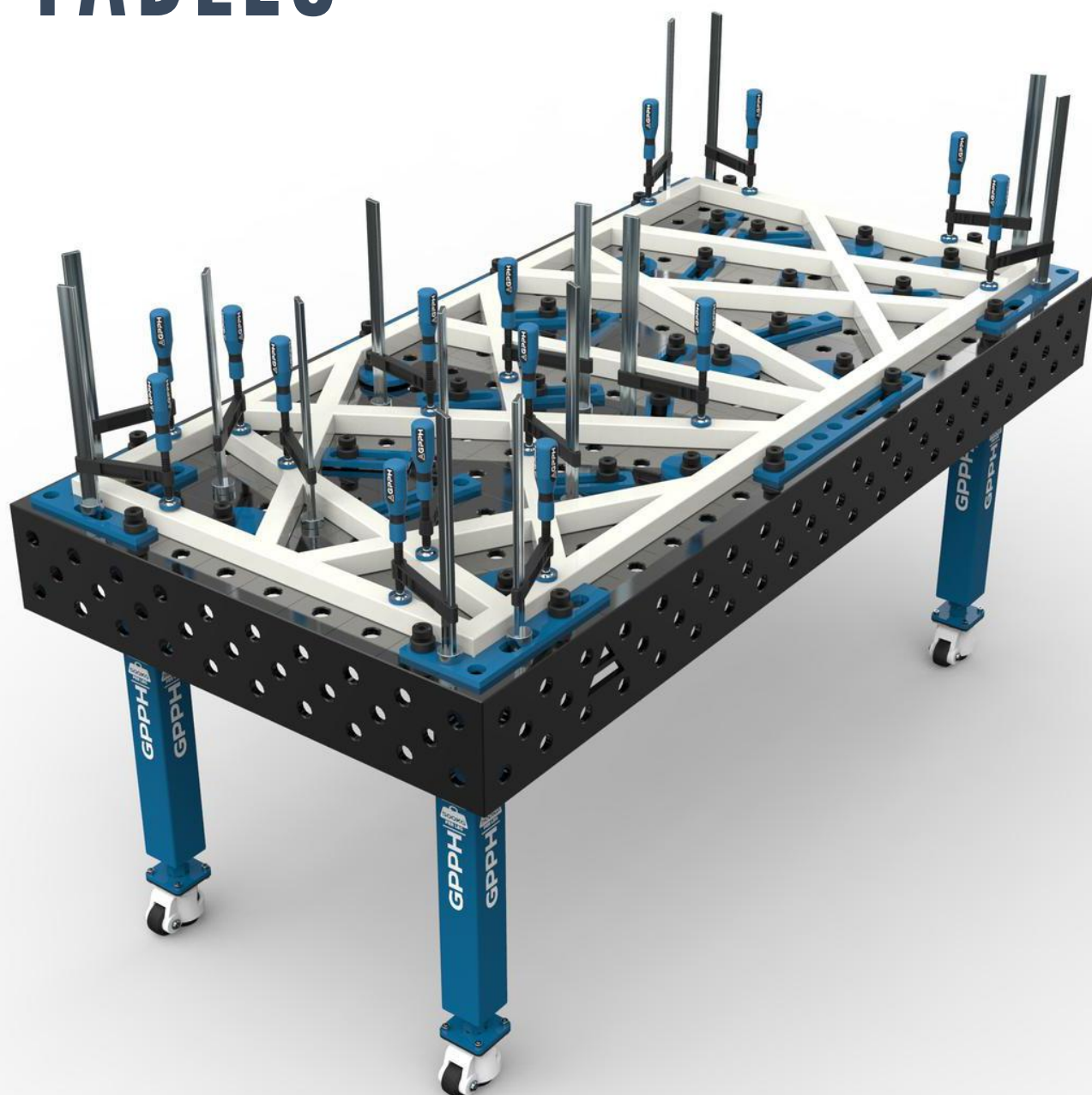
CLAMP SHELF M

TOOLKIT^{PRO} NO. 4

Number of jigs & fixtures included in the kit: 26



GPPH TRADITIONAL WELDING TABLES **PLUS**

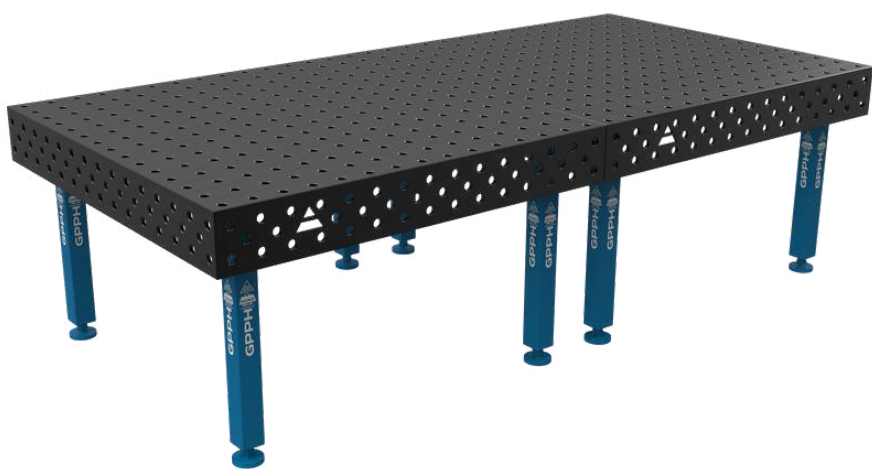


TECHNICAL PARAMETERS

- Stable and massive construction
- The highest quality of workmanship
- Perfect flatness of the table [+ / - 0,5mm]
- Made of S355J2+N
- Thickness 12mm
- Holes of system $\varnothing 16$ or $\varnothing 28$ in the grid 100x100
- Three grids of holes on the 4 sides
- Chamfered holes for easy tool assembly
- Engraved scale in the grid 100x100mm
- Table legs made of profile 80x80mm
- Height adjustment of the table with standard legs approx. 880-930mm
- Possibility of using stainless steel covers
- Tables can be combined freely to extend a working surface
- All tables are reinforced with ribs
- Produced with standard ISO 2768-1



DIMENSIONS OF TRADITIONAL WELDING TABLES^{PLUS}



**GPPH TRADITIONAL WELDING
TABLE^{PLUS}
TWT.PLUS.300148**

- dimension: 3000x1480mm
- side plate: 200mm
- capacity: 4 000 kg
- number of legs: 8



**GPPH TRADITIONAL WELDING
TABLE^{PLUS}
TWT.PLUS.240120**

- dimension: 2400x1200mm
- side plate: 200mm
- capacity: 3 000 kg
- number of legs: 6



DIMENSIONS OF TRADITIONAL WELDING TABLES^{PLUS}



GPPH TRADITIONAL WELDING TABLE^{PLUS} TWT.PLUS.200100

- dimension: 2000x1000mm
- side plate: 200mm
- capacity: 2 000 kg
- number of legs: 4
- net price: 1 290 €



GPPH TRADITIONAL WELDING TABLE^{PLUS} TWT.PLUS.150148

- dimension: 1500x1480mm
- side plate: 200mm
- capacity: 2 000 kg
- number of legs: 4



DIMENSIONS OF TRADITIONAL WELDING TABLES^{PLUS}



GPPH TRADITIONAL WELDING TABLE^{PLUS} TWT.PLUS.150100

- dimension: 1500x1000mm
- side plate: 200mm
- capacity: 2 000 kg
- number of legs: 4



GPPH TRADITIONAL WELDING TABLE^{PLUS} TWT.PLUS.120120

- dimension: 1200x1200mm
- side plate: 200mm
- capacity: 2 000 kg
- number of legs: 4



DIMENSIONS OF TRADITIONAL WELDING TABLES^{PLUS}



GPPH TRADITIONAL WELDING TABLE^{PLUS} TWT.PLUS.120100

- dimension: 1200x1000mm
- side plate: 200mm
- capacity: 2 000 kg
- number of legs: 4



GPPH TRADITIONAL WELDING TABLE^{PLUS} TWT.PLUS.12080

- dimension: 1200x800mm
- side plate: 200mm
- capacity: 2 000 kg
- number of legs: 4



DIMENSIONS OF TRADITIONAL WELDING TABLES^{PLUS}



GPPH TRADITIONAL WELDING TABLE^{PLUS} TWT.PLUS.100100

- dimension: 1000x1000mm
- side plate: 200mm
- capacity: 2 000 kg
- number of legs: 4

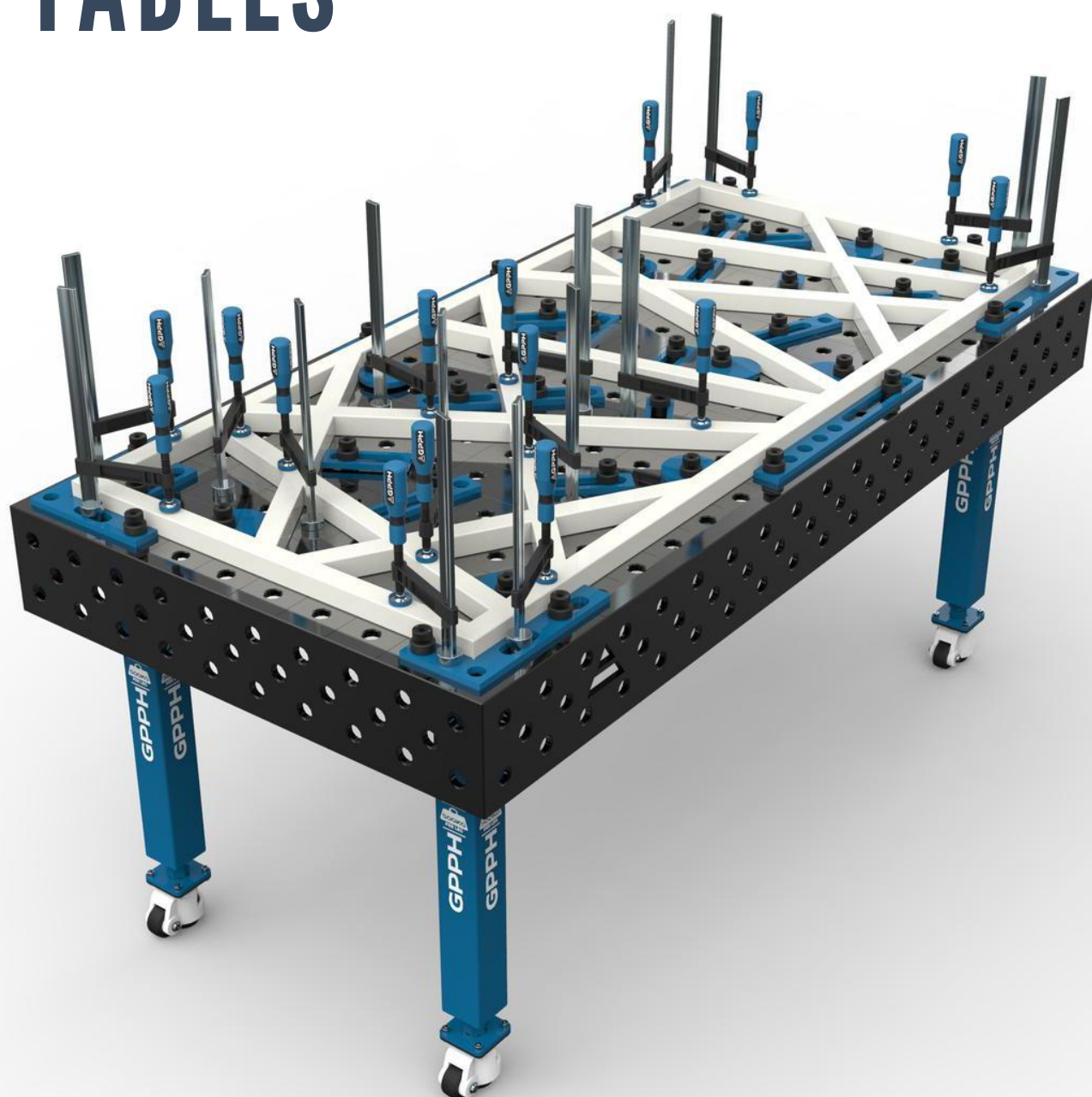


GPPH TRADITIONAL WELDING TABLE^{PLUS} TWT.PLUS.10060

- dimension: 1000x600mm
- side plate: 200mm
- capacity: 2 000 kg
- number of legs: 4



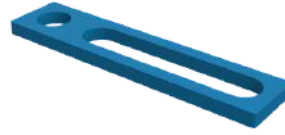
TOOLING FOR TRADITIONAL WELDING TABLES **PLUS**



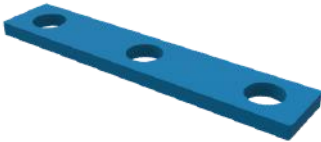
TOOLING FOR TRADITIONAL WELDING TABLES ^{PLUS}



STOP PLUS 150
N.004PLUS | Cat. No.



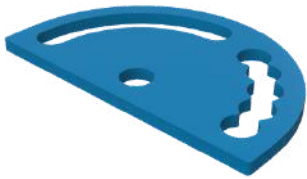
STOP PLUS 225
N.005PLUS | Cat. No.



STOP PLUS 260
N.006PLUS | Cat. No.



STOP PLUS 500
N.007PLUS | Cat. No.



PROTRACTOR PLUS
N.008PLUS | Cat. No.



**ANGLE PRECISION
SQUARE (FLAT)
PLUS 275X150**
N.009PLUS | Cat. No.



**ANGLE PRECISION
SQUARE (FLAT)
PLUS 320X150**
N.010PLUS | Cat. No.



**ANGLE PRECISION
SQUARE (FLAT)
PLUS 350X250**
N.011PLUS | Cat. No.



**ECCENTRIC STOP
PLUS Ø100**
N.003PLUS | Cat. No.



TOOLING FOR TRADITIONAL WELDING TABLES ^{PLUS}



**ANGLE BRACKET
PLUS 185X175**
N.012PLUS | Cat. No.



**ANGLE BRACKET
PLUS 200X200**
N.013PLUS | Cat. No.



**ANGLE BRACKET
PLUS 300X190**
N.014PLUS | Cat. No.



**ANGLE BRACKET
PLUS 450X250**
N.015PLUS | Cat. No.



**ANGLE BRACKET PLUS
275X500X175X100**
N.016PLUS | Cat. No.



**FAST ASSEMBLY
BOLT 23 PLUS**
N.002PLUS | Cat. No.



MOUNTING PIN PLUS
T.015PLUS | Cat. No.



TOOLING FOR TRADITIONAL WELDING TABLES^{PRO}



TABLE EXTENSION PLUS
1000X100
N.017PLUS | Cat. No.



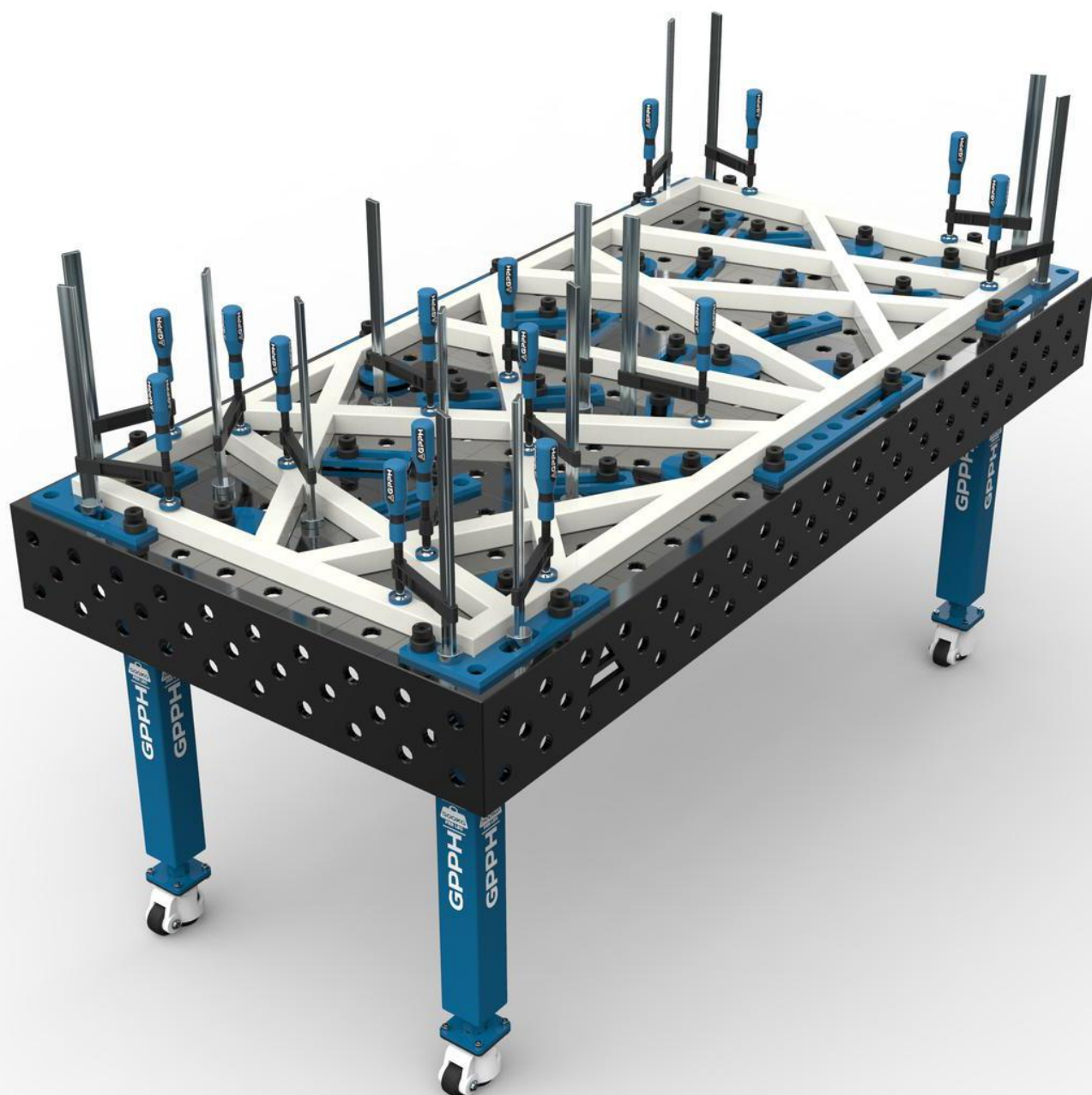
TABLE EXTENSION PLUS
1000X200
N.018PLUS | Cat. No.



WELDING CONNECTION
BLOCK PLUS 1000X200X200
N.019PLUS | Cat. No.



TOOLKIT PROPOSAL PLUS



TOOLKIT^{PLUS} NO. 1

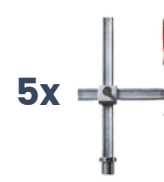
Number of jigs & fixtures included in the kit: 146



10x FASTENING CLAMP



10x FASTENING CLAMP WITH LEVER



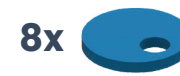
5x VARIABLE THROAT DEPTH CLAMP



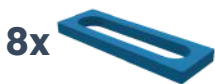
5x VARIABLE THROAT DEPTH WITH LEVER CLAMP



40x FAST ASSEMBLY BOLT 23 PLUS



8x ECCENTRIC STOP PLUS Ø100



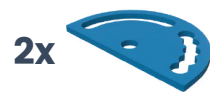
8x STOP PLUS 150



4x STOP PLUS 225



4x STOP PLUS 500



2x PROTRACTOR PLUS



4x ANGLE PRECISION SQUARE (FLAT) PLUS 320X150



2x ANGLE PRECISION SQUARE (FLAT) PLUS 350X250



8x ANGLE BRACKET PLUS 185X175



2x ANGLE BRACKET PLUS 200X200



4x ANGLE BRACKET PLUS 300X190



4x ANGLE BRACKET PLUS 450X250



2x ANGLE BRACKET PLUS 270X500X175X100



2x TABLE EXTENSION PLUS 1000X100



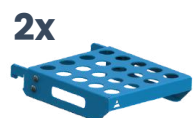
2x TABLE EXTENSION 2000X100



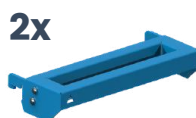
1x WELDING TORCH HANDLE



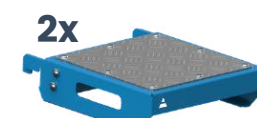
10x PRISM Ø58MM 130°



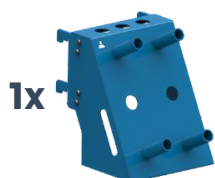
2x FAST ASSEMBLY BOLT SHELF M



2x CLAMP SHELF M



2x FLATSHELF M



1x MIX SHELF



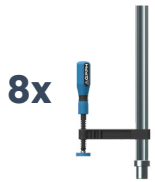
1x DOCUMENTATION SHELF



1x TOOL TROLLEY M / TOOL TROLLEY L (OPTIONS)

TOOLKIT^{PLUS} NO. 2

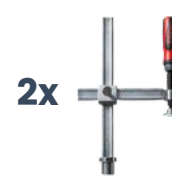
Number of jigs & fixtures included in the kit: 93



8x FASTENING CLAMP



4x FASTENING CLAMP WITH LEVER



2x VARIABLE THROAT DEPTH CLAMP



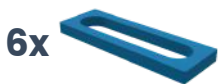
2x VARIABLE THROAT DEPTH WITH LEVER CLAMP



30x FAST ASSEMBLY BOLT 23 PLUS



6x ECCENTRIC STOP PLUS Ø100



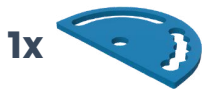
6x STOP PLUS 150



4x STOP PLUS 225



2x STOP PLUS 500



1x PROTRACTOR PLUS



4x ANGLE PRECISION SQUARE (FLAT) PLUS 320X150



2x ANGLE PRECISION SQUARE (FLAT) PLUS 350X250



4x ANGLE BRACKET PLUS 185X175



2x ANGLE BRACKET PLUS 200X200



2x ANGLE BRACKET PLUS 300X190



2x ANGLE BRACKET PLUS 450X250



1x TABLE EXTENSION PLUS 1000X100



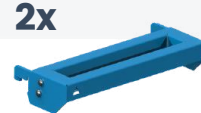
1x TABLE EXTENSION PLUS 2000X100



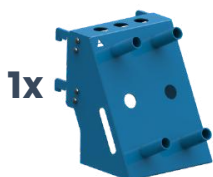
4x PRISM Ø58MM 130°/90°



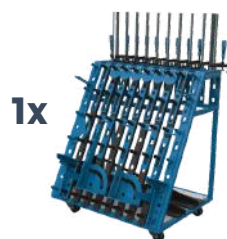
2x FAST ASSEMBLY BOLT SHELF M



2x CLAMP SHELF M



1x MIX SHELF



1x TOOL TROLLEY M / TOOL TROLLEY L (OPTIONS)

TOOLKIT^{PLUS} NO. 3

Number of jigs & fixtures included in the kit: 58



8x

FASTENING
CLAMP



2x

FASTENING
CLAMP
WITH LEVER



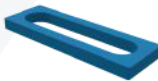
18x

FAST ASSEMBLY
BOLT 23 PLUS



4x

ECCENTRIC STOP
PLUS Ø100



4x

STOP PLUS
150



4x

STOP PLUS
225



1x

PROTRACTOR
PLUS



2x

ANGLE PRECISION
SQUARE (FLAT)
PLUS 320X150



2x

ANGLE PRECISION
SQUARE (FLAT)
PLUS 350X250



4x

ANGLE BRACKET
PLUS 185X175



2x

ANGLE BRACKET
PLUS 200X200



2x

ANGLE BRACKET
PLUS 300X190



1x

ANGLE BRACKET
PLUS 450X250



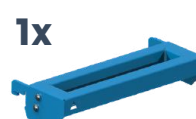
2x

PRISM Ø58MM
130°/90°



1x

FAST ASSEMBLY
BOLT SHELF M



1x

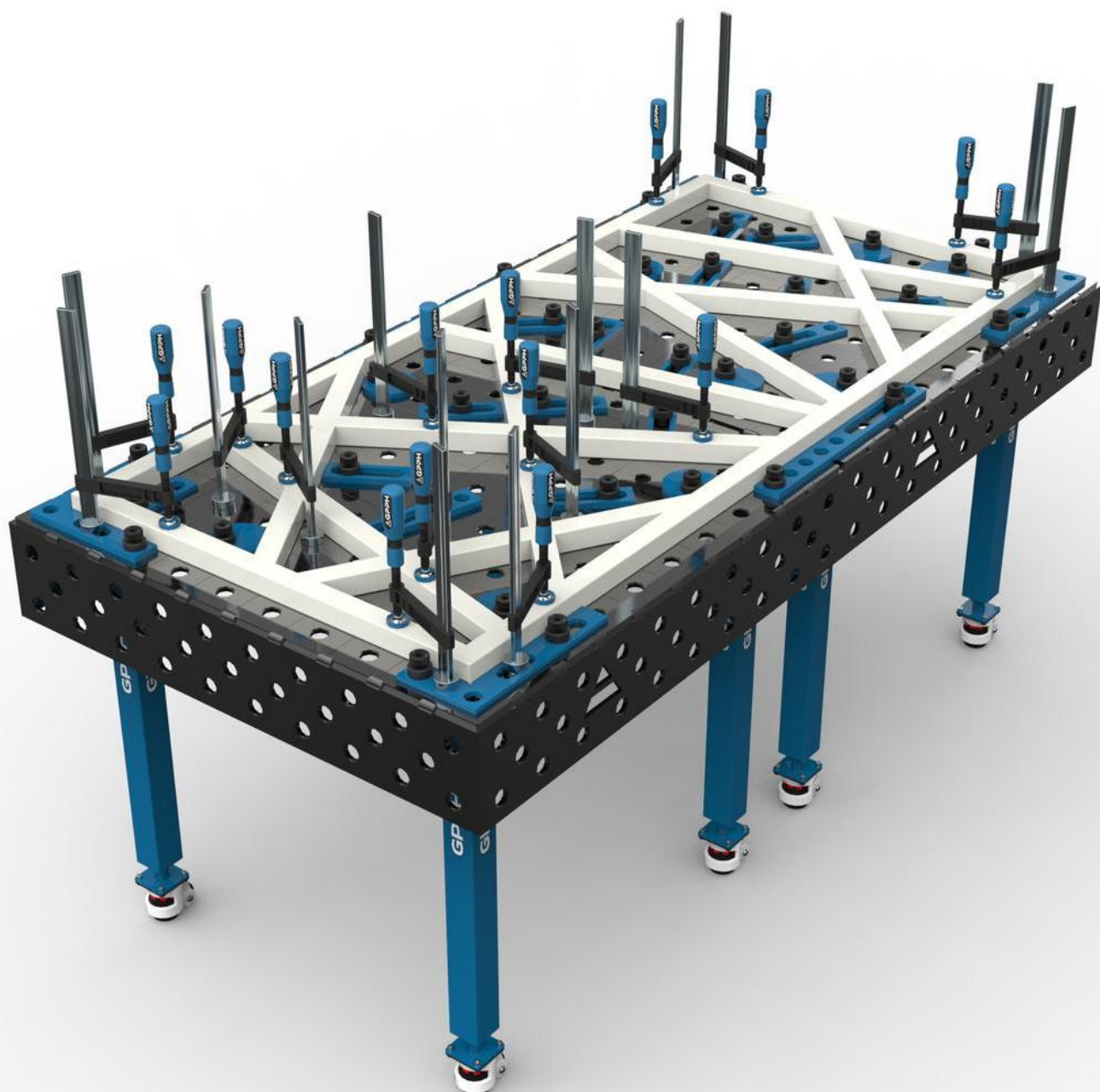
CLAMP SHELF M

TOOLKIT^{PLUS} NO. 4

Number of jigs & fixtures included in the kit: 26

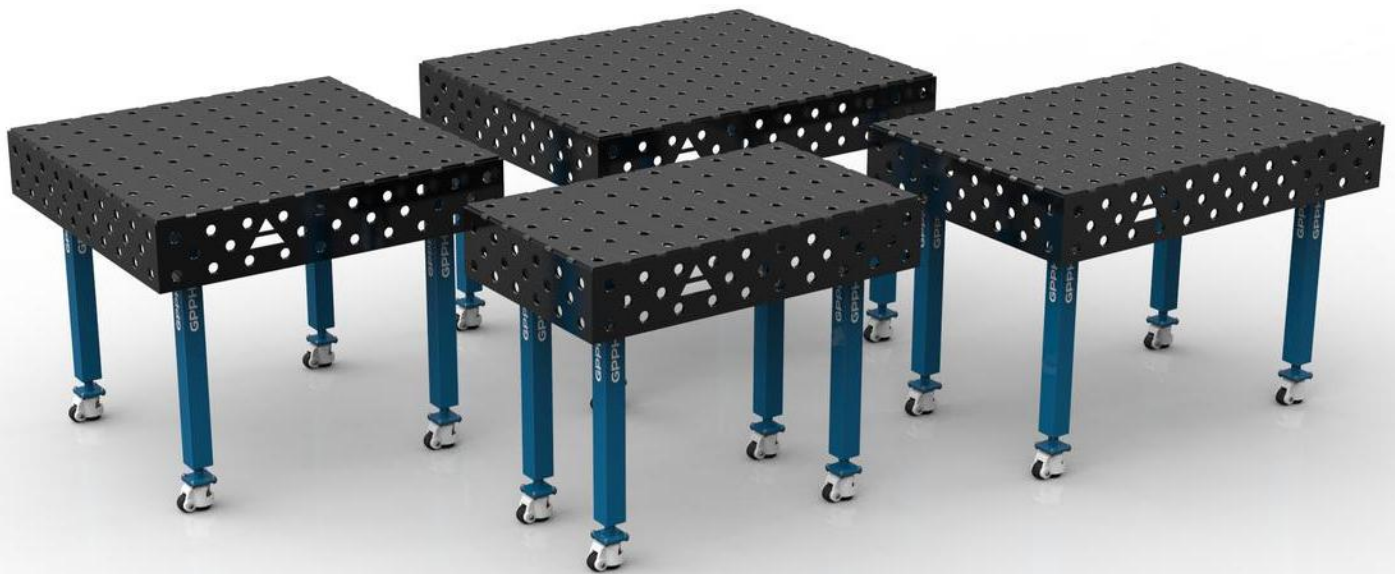


GPPH TRADITIONAL WELDING TABLES^{ECO}



TECHNICAL PARAMETERS

- Stable and massive construction
- The highest quality of workmanship
- Perfect flatness of the table [+/ - 0,5mm]
- Made of S355J2+N
- Thickness 8mm
- Holes of system $\varnothing 16$ or $\varnothing 28$ in the grid 100x100
- Three grids of holes on the 4 sides
- Holes for easy tool mounting
- Engraved scale in the grid 100x100mm
- Table legs made of profile 60x60mm
- Height adjustment of the table with standard legs approx. 880–930mm
- Possibility of using stainless steel covers
- Tables can be combined freely to extend a working surface
- All tables are reinforced with ribs
- Produced with standard ISO 2768–1
- There is an option to purchase, for an additional charge, ECO welding table in UP version - with milled and chamfered holes



DIMENSIONS OF TRADITIONAL WELDING TABLES^{ECO}



**GPPH TRADITIONAL WELDING
TABLE^{ECO}
TWT.ECO.120100**

- dimension: 1200x1000mm
- side plate: 190mm
- capacity: 1 000 kg
- number of legs: 4



**GPPH TRADITIONAL WELDING
TABLE^{ECO}
TWT.ECO.12080**

- dimension: 1200x800mm
- side plate: 190mm
- capacity: 1 000 kg
- number of legs: 4



DIMENSIONS OF TRADITIONAL WELDING TABLES^{ECO}



GPPH TRADITIONAL WELDING TABLE^{ECO} TWT.ECO.100100

- dimension: 1000x1000mm
- side plate: 190mm
- capacity: 1 000 kg
- number of legs: 4

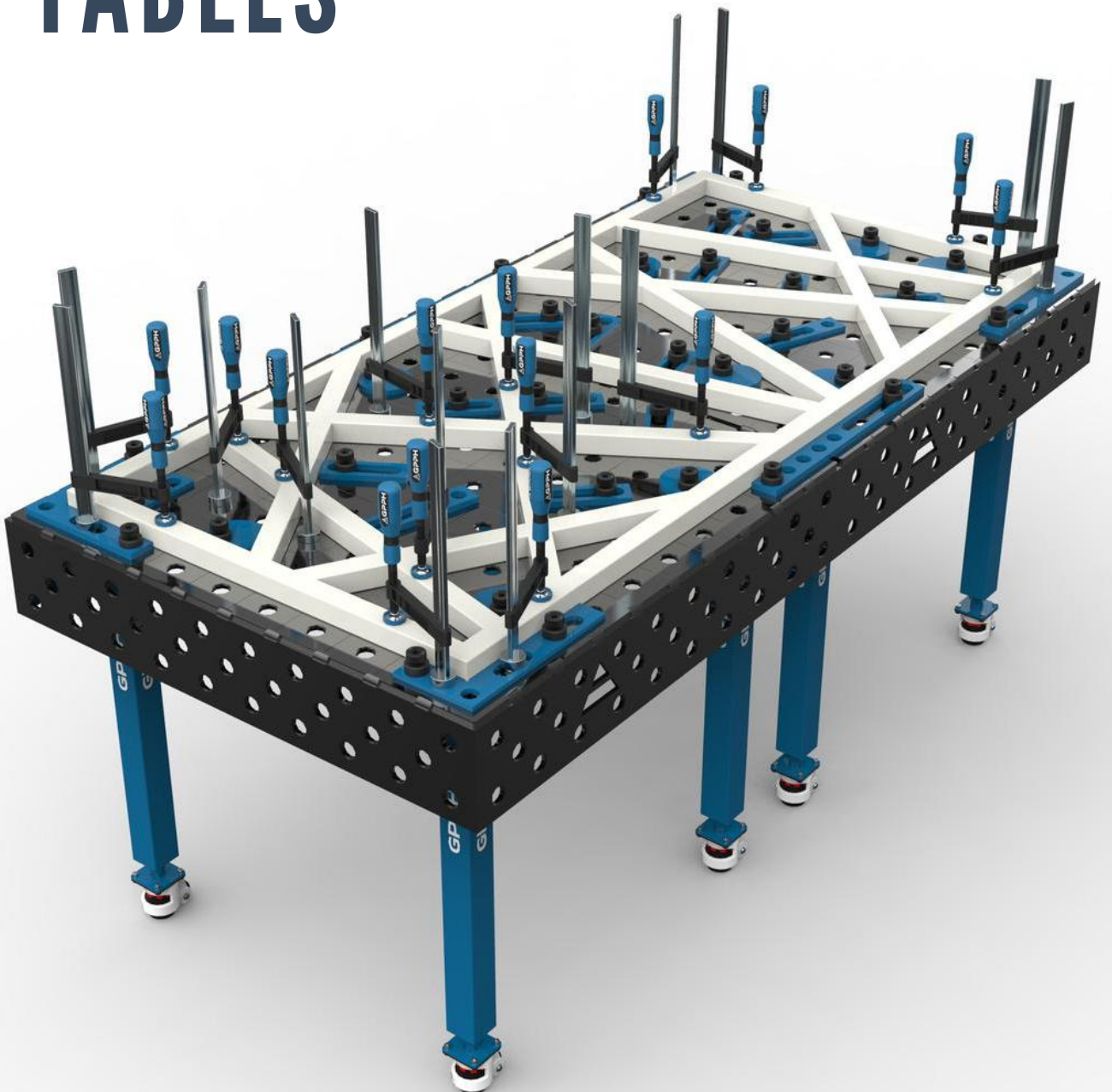


GPPH TRADITIONAL WELDING TABLE^{ECO} TWT.ECO.10060

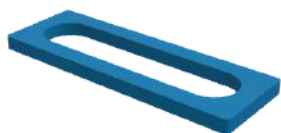
- dimension: 1000x600mm
- side plate: 190mm
- capacity: 1 000 kg
- number of legs: 4



TOOLING FOR TRADITIONAL WELDING TABLES^{ECO}



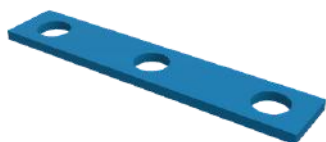
TOOLING FOR TRADITIONAL WELDING TABLES^{ECO}



STOP ECO 150
N.004ECO | Cat. No.



STOP ECO 225
N.005ECO | Cat. No.



STOP ECO 260
N.006ECO | Cat. No.



STOP ECO 500
N.007ECO | Cat. No.



PROTRACTOR ECO
N.008ECO | Cat. No.



**ANGLE PRECISION
SQUARE (FLAT)
ECO 275X150**
N.009ECO | Cat. No.



**ANGLE PRECISION
SQUARE (FLAT)
ECO 320X150**
N.010ECO | Cat. No.



**ANGLE PRECISION
SQUARE (FLAT)
ECO 350X250**
N.011ECO | Cat. No.



**ECCENTRIC STOP
ECO Ø100**
N.003ECO | Cat. No.



TOOLING FOR TRADITIONAL WELDING TABLES^{ECO}



**ANGLE BRACKET
ECO 185X175**
N.012ECO | Cat. No.



**ANGLE BRACKET
200X200**
N.013ECO | Cat. No.



**ANGLE BRACKET
ECO 300X190**
N.014ECO | Cat. No.



**ANGLE BRACKET
ECO 450X250**
N.015ECO | Cat. No.



**ANGLE BRACKET ECO
275X500X175X100**
N.016ECO | Cat. No.



**FAST ASSEMBLY
BOLT ECO**
N.002ECO | Cat. No.



MOUNTING PIN ECO
T.015ECO | Cat. No.



TOOLING FOR TRADITIONAL WELDING TABLES^{ECO}

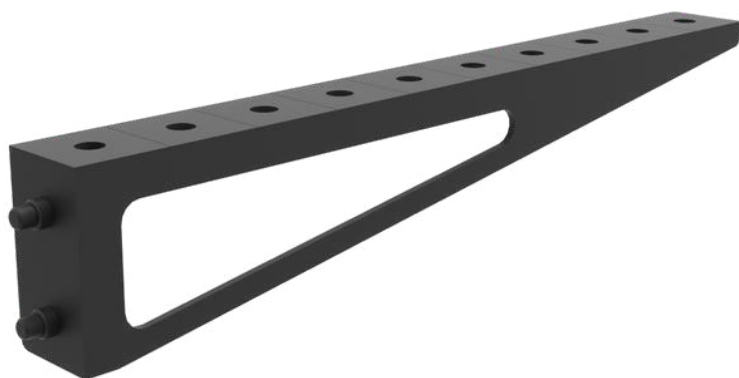


TABLE EXTENSION ECO

1000X100

N.017ECO | Cat. No.

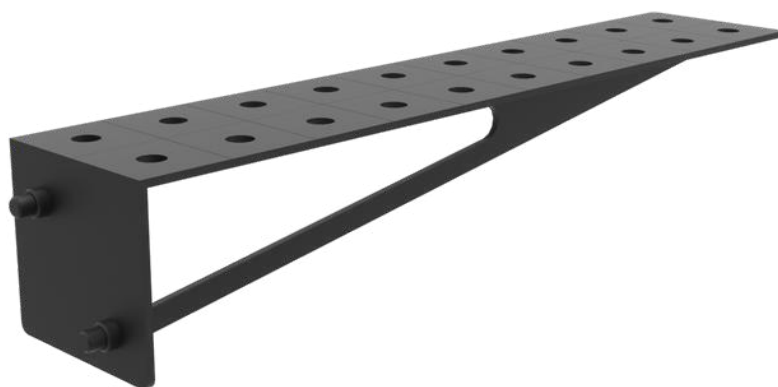
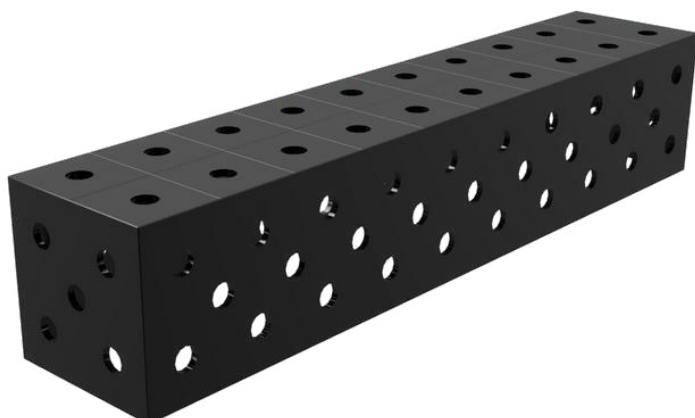


TABLE EXTENSION ECO

1000X200

N.018ECO | Cat. No.



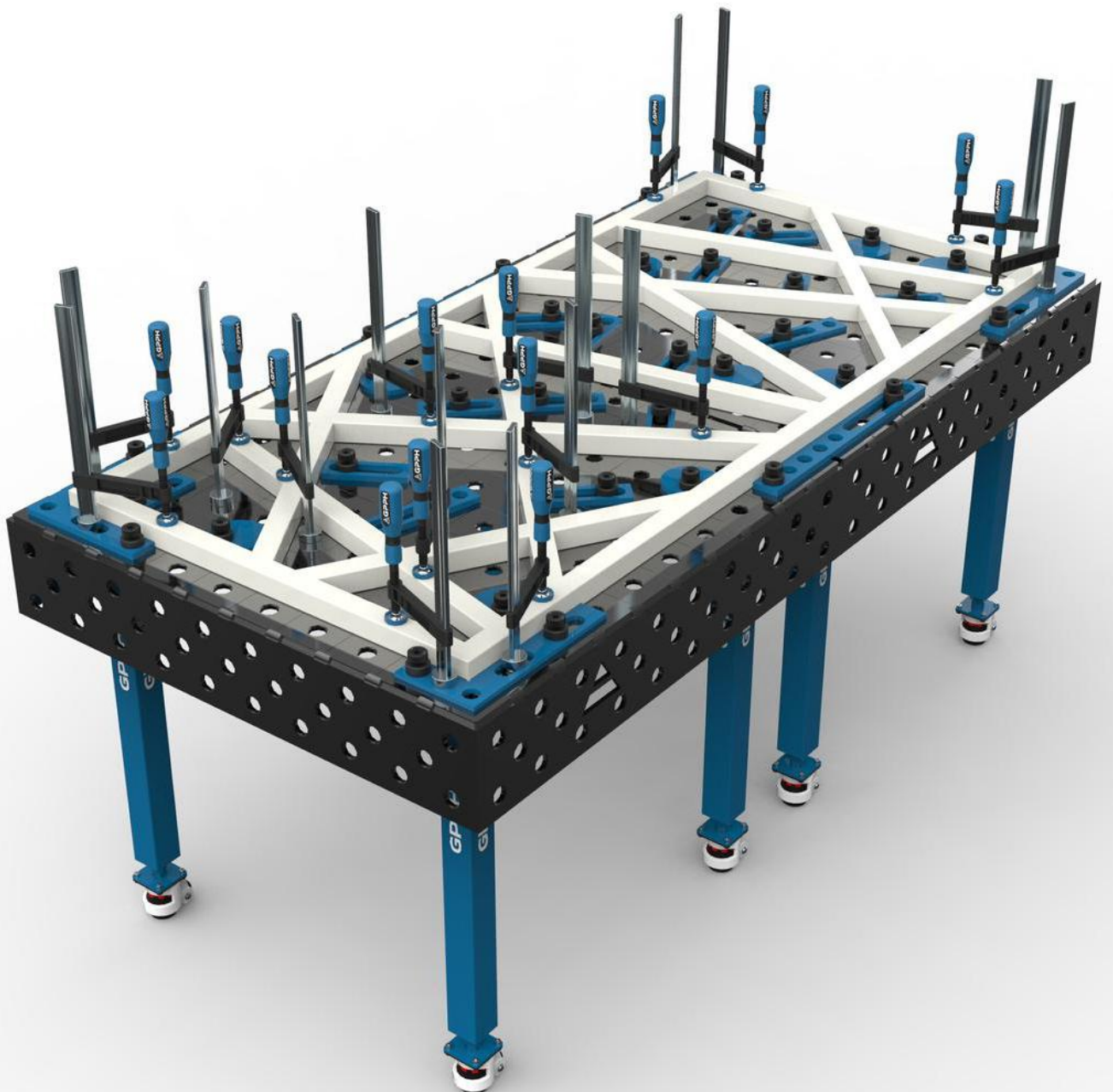
WELDING CONNECTION

BLOCK ECO 1000X200X200

N.019ECO | Cat. No.



TOOLKIT PROPOSAL **ECO**



TOOLKIT^{ECO} NO. 1

Number of jigs & fixtures included in the kit: 146



TOOLKIT^{ECO} NO. 2

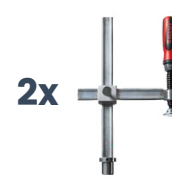
Number of jigs & fixtures included in the kit: 93



8x FASTENING CLAMP



4x FASTENING CLAMP WITH LEVER



2x VARIABLE THROAT DEPTH CLAMP



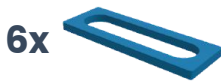
2x VARIABLE THROAT DEPTH WITH LEVER CLAMP



30x FAST ASSEMBLY BOLT ECO 16



6x ECCENTRIC STOP ECO Ø100



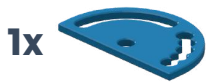
6x STOP ECO 150



4x STOP ECO 225



2x STOP ECO 500



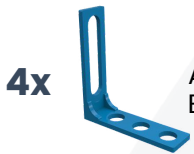
1x PROTRACTOR ECO



4x ANGLE PRECISION SQUARE (FLAT) ECO 320X150



2x ANGLE PRECISION SQUARE (FLAT) ECO 350X250



4x ANGLE BRACKET ECO 185X175



2x ANGLE BRACKET ECO 200X200



2x ANGLE BRACKET ECO 300X190



2x ANGLE BRACKET ECO 450X250



1x TABLE EXTENSION ECO 1000X100



1x TABLE EXTENSION ECO 2000X100



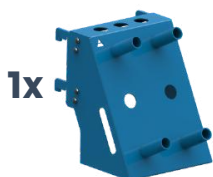
4x PRISM Ø58MM 130°/90°



2x FAST ASSEMBLY BOLT SHELF M



2x CLAMP SHELF M



1x MIX SHELF



1x TOOL TROLLEY M / TOOL TROLLEY L (OPTIONS)

TOOLKIT^{ECO} NO. 3

Number of jigs & fixtures included in the kit: 58



8x

FASTENING
CLAMP



2x

FASTENING
CLAMP
WITH LEVER



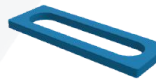
18x

FAST ASSEMBLY
BOLT ECO 16



4x

ECCENTRIC STOP
ECO Ø100



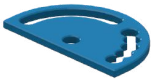
4x

STOP ECO
150



4x

STOP ECO
225



1x

PROTRACTOR
ECO



2x

ANGLE PRECISION
SQUARE (FLAT)
ECO 320X150



2x

ANGLE PRECISION
SQUARE (FLAT)
ECO 350X250



4x

ANGLE BRACKET
ECO 185X175



2x

ANGLE BRACKET
ECO 200X200



2x

ANGLE BRACKET
ECO 300X190



1x

ANGLE BRACKET
ECO 450X250



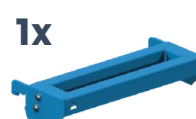
2x

PRISM Ø58MM
130°/90°



1x

FAST ASSEMBLY
BOLT SHELF M



1x

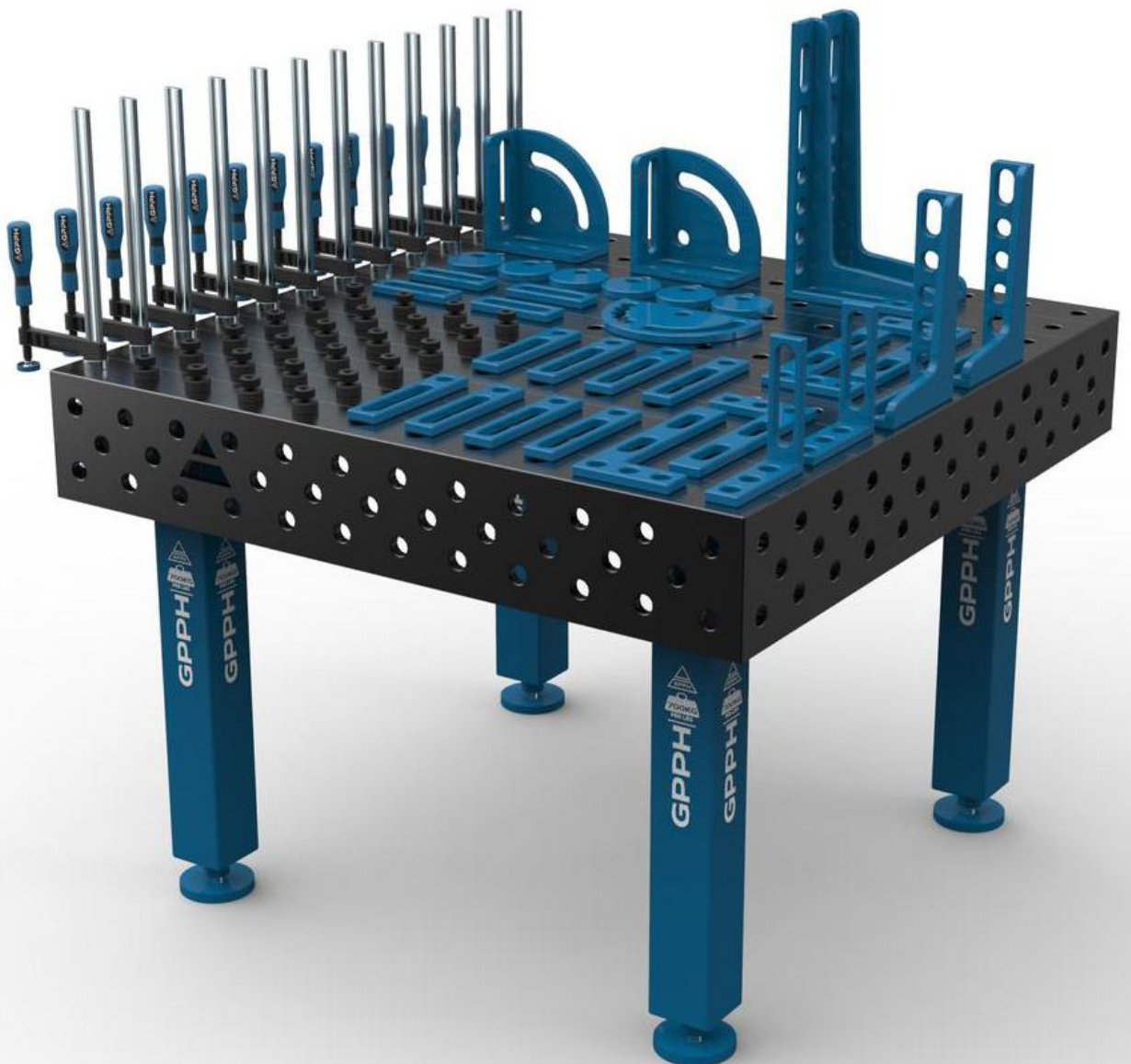
CLAMP SHELF M

TOOLKIT^{ECO} NO. 4

Number of jigs & fixtures included in the kit: 26



ADDITIONAL EQUIPMENT FOR GPPH WELDING TABLES



ADDITIONAL EQUIPMENT



FASTENING CLAMP
N.001A | Cat. No.



FASTENING CLAMP WITH LEVER
N.001B | Cat. No.



VARIABLE THROAT DEPTH CLAMP
N.001C | Cat. No.



VARIABLE THROAT DEPTH WITH LEVER CLAMP
N.001D | Cat. No.



FASTENING CLAMP
N.001E | Cat. No.



FASTENING CLAMP WITH LEVER
N.001F | Cat. No.



ADDITIONAL EQUIPMENT



PRISM
 Ø58mm 130°
 N.021 | Cat. No.



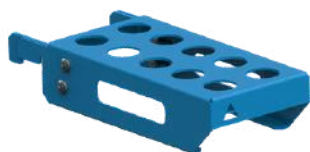
PRISM
 Ø58mm 130°/ 90°
 N.023 | Cat. No.



PRISM
 Ø58mm 90°
 N.022 | Cat. No.



WELDING TORCH
HANDLE
 N.020 | Cat. No.



FAST ASSEMBLY
BOLT SHELF S
 T.011A | Cat. No.



FAST ASSEMBLY
BOLT SHELF M
 T.011B | Cat. No.



ADDITIONAL EQUIPMENT



CLAMP SHELF S
T.011C | Cat. No.



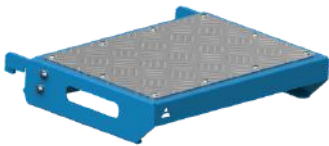
CLAMP SHELF M
T.011D | Cat. No.



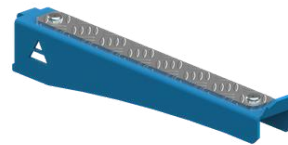
FLAT SHELF S
T.011E | Cat. No.



FLAT SHELF M
T.011F | Cat. No.



FLAT SHELF L
T.011G | Cat. No.



**MOBILE SHELF
FOR EXTENSIONS**
T.011J | Cat. No.



MIX SHELF
T.011H | Cat. No.



**DOCUMENTATION
SHELF**
T.011I | Cat. No.



ADDITIONAL EQUIPMENT



**CONCENTRATED
ANTI-SPATTER
LIQUID BEST WELD 1L**
T.013A | Cat. No.



**CONCENTRATED
ANTI-SPATTER
LIQUID BEST WELD 5L**
T.013B | Cat. No.



**CONCENTRATED
DEGREASING AND
CLEANING LIQUID
BEST MAX 1L**
T.013C | Cat. No.



**CONCENTRATED
DEGREASING AND
CLEANING LIQUID
BEST MAX 5L**
T.014D | Cat. No.

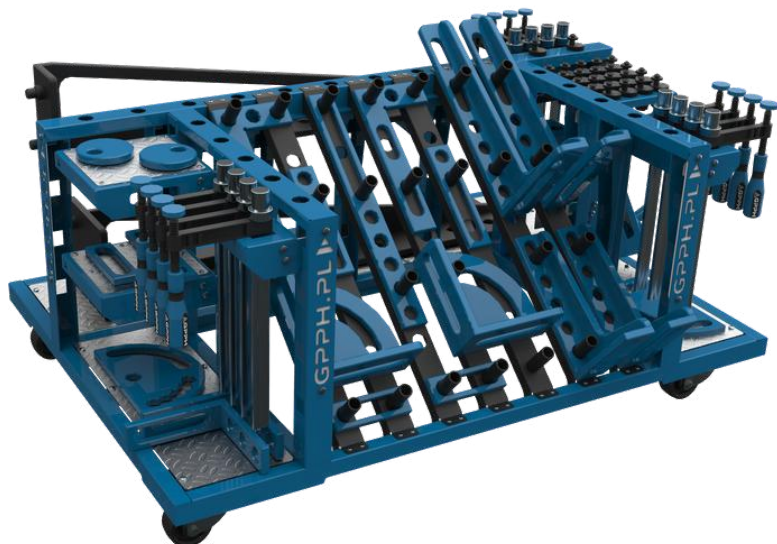


SPRAYER
T.014 | Cat. No.



ORDER DOES MATTER

GPPH TOOL TROLLEY



One of the many advantages of the small tool trolley is that it fits under most dimensions of GPPH Welding Tables. You have all the tools at your fingertips while working!

The large GPPH tool trolley will accommodate a set of tools even for the most demanding user! Thanks to it, your workplace will become transparent like never before, and GPPH tools will be clearly arranged and more accessible.



NEED MORE MOBILITY OF YOUR WELDING TABLE?

CHECK OUT OUR OFFER OF WELDING TABLES
ON LEGS WITH WHEELS!



GPPH ROTARY WELDING POSITIONER



GPPH ROTARY WELDING POSITIONER

Mainly used to implement the relevant technological processes to improve welding quality and speed. Positioner makes the stabilization of the item as well as handling it much easier hence to which the work is fast, efficient, safe, and work pieces of standard and irregular shapes are easy accessible and precisionally made.

The positioner's main advantages are:

- increase in work efficiency and lowering production costs;
- increase in safety and improvement of work ergonomics;
- effortless positioning of welded items and better organization of the workplace.

The above advantages are possible to achieve due to innovative solutions of the welding positioner, these are:

- smooth rotation of the welding positioner's table;
- innovative automatic mode affecting precision and repeatability of work;
- possibility of welding pipes using a $\varnothing 50\text{mm}$ hole;
- compatibility with welding tables in system 28;
- stable and ergonomic construction.



GPPH ROTARY WELDING POSITIONER

Operations such as preparation, positioning, selection of welding parameters and fixing, the operator performs manually with the unit switched off.

The actual working operation is performed at a properly prepared workplace.

The operator performs welding manually, the welded material is rotating around its own axle manually or automatically depending on previously saved parameters.

Applied systems:

- LPM (Low Power Movement) - stable power and table rotation speed at both low and high speeds.;
- SPC (System of Protect Conduction) - conduction implemented through special brushes in the welding head;
- SES (Separated Electronic System) - separating electronic components from the device case by means of galvanic isolation;
- DPC (Double Protect Control) - two safety switches, first located on the device case, second on the control pedal;
- SPS (Support of Perfect Stability) - a system for setting the right angle with a pressure knob securing the table inclination, together with the armrest stabilizing the position of the hand.



TECHNICAL PARAMETERS

- Stable and solid construction
- The highest quality of workmanship
- Supply voltage 230 / 50Hz
- Max. load capacity with horizontal table position: 70kg
- Max. load capacity with vertical table position: 30kg
- Max. diameter of through hole: 50mm
- The range of manual table tilt adjustment: 0° - 90°
- Smooth regulation of the rotational speed of the table: 0 - 20 rpm
- Rotary table #15mm with holes in System 28
- Wide range of centering engravings for lathe chucks
- Manual and automatic operation mode
- 50W power consumption
- Dimensions: 0.5x0.5xH0.5m
- Weight approx. 25 kg
- The machine has a CE Declaration of Conformity
- Net price: 1 960 €



STANDARD EQUIPMENT

Welding positioner:

- rotary table with mounting holes;
- efficient drive with low power consumption;
- knob for adjusting the device's tilt;
- PLC control programmer;
- safety switch;
- mounting holes, compatible with GPPH tables in System 28;
- made in accordance with the Machinery Directive 2006/42EC;



PLC control programmer:

- manual mode with smooth speed regulation;
- automatic mode;
- the ability to save up to 10 programs. Users have at their disposal settings such as: rotation speed, table rotation angle, pitch angle, stopping time;
- 3 control buttons;
- screen protected with replaceable welding glass, cheap and easy to replace solution!



Two-part control pedal:

- metal and durable construction;
- direction of rotation left / right;
- pedals made of corrugated sheet metal;
- smooth speed regulation, depending on the pressure of the foot on the control pedal
- safety switch;
- start / stop buttons.



STANDARD EQUIPMENT

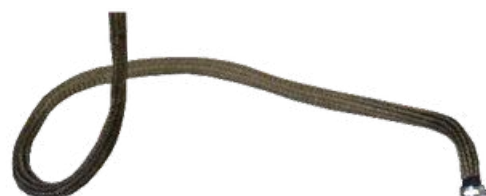
Armrest

- perfect hand stabilization during the welding process;
- locked with 3 clamping screws;
- adjustable work height;
- mounting hole, compatible with GPPH tables in System 28.



Electric wire:

- permanent connection of the welding positioner with the control pedal;
- coated with basalt fiber;
- resistant to temperatures up to 1400°C.



Wooden packaging:

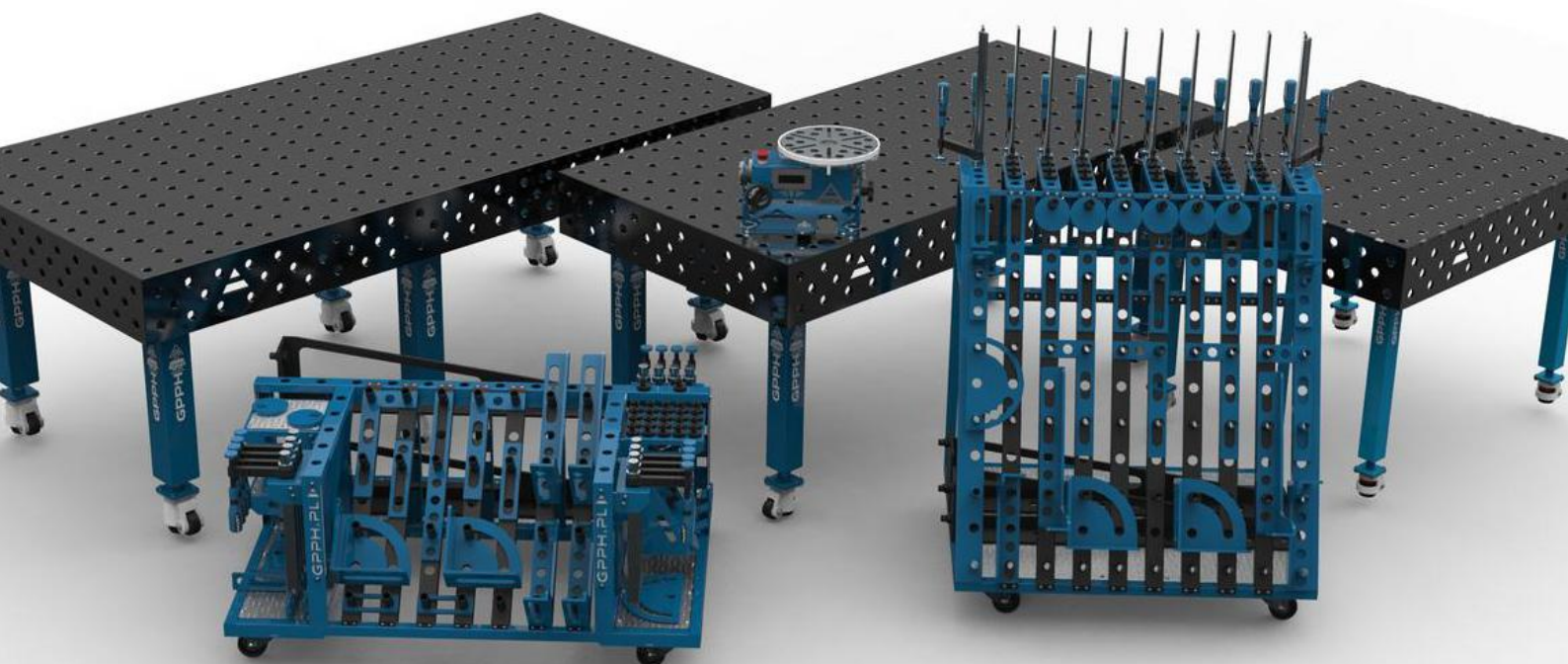
- durable packaging protecting the device during transport and storage.



THANK YOU FOR YOUR TIME SPENT ON ACQUAINTING WITH GPPH OFFER

WE HOPE FOR LONG-LASTING AND SUCCESSFUL
COOPERATION.

IN CASE OF ANY QUESTIONS, I OFFER HELP
AND EXPERTISE.



**GRUPA PROJEKTOWO
PRODUKCYJNO HANDLOWA**

