






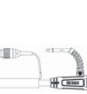
WELDLINE™
by Lincoln Electric

WTT2 9
WTT2 17
WTT2 26



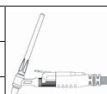
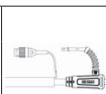


Instructions for safety, use and maintenance

Ergonomic Range

WTT2	4 m	8 m		
9 EB S	W000278877	W000278929		
17 EB S	W000278881	W000278920		
26 EB S	W000278886	W000278916		
9 EB C5B	W000278875	-		
17 EB C5B	W000278882	W000278919		
26 EB C5B	W000278887	W000278915		
17 EB S/C5B FLEX	W000382782	W000382783		
26 EB S/C5B FLEX	W000382784	W000382785		

French lever range

WTT2	4 m	8 m		
9 RL S	W000278878	W000278923		
17 RL S	W000278883	W000278918		
26 RL S	W000278888	W000278914		
9 RL C5B	W000278879	W000278922		
17 RL C5B	W000278884	W000278917		
26 RL C5B	W000278890	W000278913		

Safety instructions

We thank you for your trust in our company by purchasing this equipment which will provide you with complete satisfaction if you comply with its conditions for use and maintenance.

CAUTION: The company declines all responsibility in case of modification, addition of components or subassemblies, or any transformation of the equipment carried out by the customer or a thirdparty, without prior specific written agreement from the company.

Arc welding and plasma cutting may be dangerous for the operator and persons close to the work area. Read the operating manual and safety instructions W000261712. See www.weldline.eu.

A) Maintenance / Troubleshooting

Before any internal verifications and repair work, make sure that the equipment is separated from the electric installation by electrical isolation (by electrical isolation is meant a group of operations designed to separate and keep the equipment de-energized).

At least every six months, you must check the proper condition of the insulation and connections of the electric equipment and accessories such as plugs, flexible wires, ducts, connectors, extension leads, parholders, electrode-holders, or torches...

Maintenance and repair work on the jackets and insulating ducts must be carried out extremely carefully.

Have defective parts repaired by a specialist, or better still, have them replaced.

Routinely check the proper tightening and cleanliness of the electric connections.

B) Work-station

Use only electrode holders and torches which are perfectly insulated.

The operator must be insulated from the ground-surface and the workpiece (gloves, safety shoes, dry clothes, leather apron, and so forth...).

Do not touch the electrode wire and the part (or the nozzle) simultaneously.

C) Protection

It is absolutely essential that you protect your eyes from blinding glare (glare of arc invisible light and infrared and ultraviolet radiation).

The welding mask, without or with helmet, must always be equipped with a protective filter whose gradation depends on the welding arc current intensity (EN 169 Standard).

Fumes emitted during welding operations may be dangerous. Use adequate protection means (fumes extraction, vented masks...)

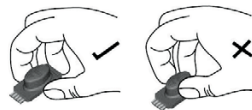
Technical data

TIG manual torch with natural cooling

WTT2		9	17	26
Current	Duty cycle 35%	110 A	135 A	180 A
	Duty cycle 60%	80 A	100 A	130 A
Light alloy welding, reduce the duty cycle about 30%				
Voltage class		L - 113 V		
Gas flow		Mini : 7 l/mn - Maxi : 13 l/mn		
Using electrodes		Ø 1.0 / 3.2 mm	Ø 1.0 / 3.2 mm	Ø 1.0 / 4.0 mm
Origin equipment fitted to the torch	Back Cap	Long	Long	Long
		Long	Long	Long
	Nozzle	Ø 10 mm	Ø 10 mm	Ø 12 mm
	Electrode	Ø 1.6 L	Ø 2.0 L	Ø 2.4 L

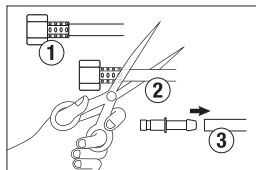
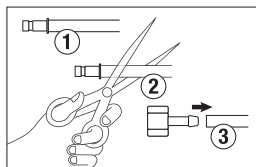
Trigger simple commands

Simplified maintenance.



Kit B			
W000279241			
Kit L			
W000279245			

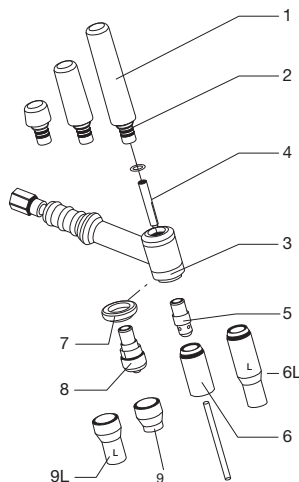
Gas connector change



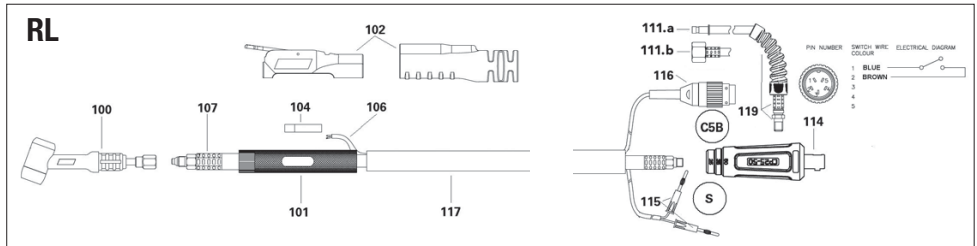
Wear parts

REP	WTT2 9	WTT2 17 WTT2 26	Ø	Wear parts
1	W000306398	W000306399	//	Short back cap
	W000306400	/	//	Medium back cap
	W000306402	W000306403	//	Long back cap
2	W000306404	W000306405	//	Back cap
3	W000306396	W000306397	//	Sealing ring
4	W000306406	W000306411	1.0	Collet
	W000306407	W000306412	1.6	
	W000306408	W000306413	2.0	
	W000306409	W000306414	2.4	
	W000306410	W000306415	3.2	
	/	W000306416	4.0	
5	W000306376	W000306380	1.0	Collet body
	W000306377	W000306381	1.6	
	W000306378	W000270781	2.0	
	W000306455	W000306382	2.4	
	W000306379	W000306383	3.2	
/	W000306384	4.0		
6	W000306417	W000306423	6.4	Nozzle
	W000306418	W000306424	8.0	
	W000306419	W000306425	9.6	
	W000306420	W000306426	11.2	
	W000306421	W000306427	12.8	
	W000306422	W000306428	16.0	
	/	W000306461	19.2	

REP	WTT2 9	WTT2 17 WTT2 26	Ø	Wear parts
6L	W000306456	/	4.8	Long Nozzle
	W000306457	W000306462	6.4	
	W000306458	W000306463	8.0	
	W000306459	W000306464	9.6	
	/	W000306465	11.2	
7	/	W000306466	//	Gas Lens sealing ring
8	W000306385	W000306389	1.0	Gas Lens collet body
	W000306386	W000306390	1.6	
	W000306460	/	2.0	
	W000306387	W000306391	2.4	
	W000306388	W000306392	3.2	
	/	W000306393	4.0	
9	W000306429	W000306434	6.4	Gas Lens nozzle
	/	W000306435	8.0	
	W000306431	W000306436	9.6	
	W000306432	W000306437	11.2	
	W000306433	W000306438	12.8	
9L	/	W000306467	8.0	Long Gas Lens nozzle
	/	W000306468	9.6	
	/	W000306469	11.2	
	/	W000306470	12.8	



Spare parts RL

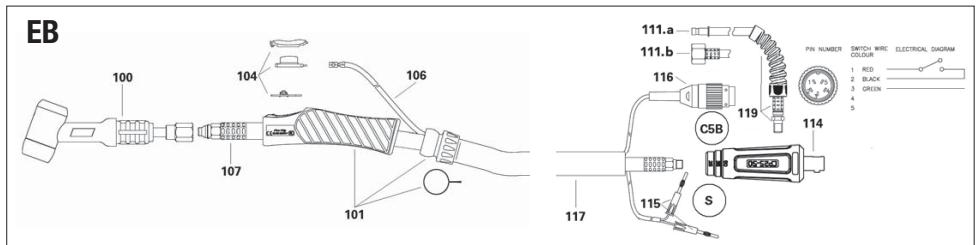


Rep	Item number	WTT	Spare parts
100	W000306471	9	Torch body
	W000306492	17	
	W000306497	26	
101	W000279230	9-17	RL handle
	W000279231	26	
102	W000279227	9-17	Switch box + Sleeve
	W000279229	26	

Rep	Item number	WTT	Spare parts
104	W000279233	9-17-26	Microswitch
106	W000352104	9-17-26	Trigger cable 2 wires
107	W000279268	9-17	4 m
	W000279269		8 m
	W000279270	26	4 m
	W000279273		8 m
111.a	W000141831	9-17-26	Quick connection gas

Rep	Item number	WTT	Spare parts
111.b	W000270829	9-17-26	Female connection M12x1
114	W000279266	9-17-26	Gas S connection
115	W000270832	S	Trigger male connection
116	W000270833	CSB	Plug 5 pins
117	W000279284	9-17	Neoprene Sheath
	W000352112	26	
119	W000279422	9-17-26	Gas inlet pipe

Spare parts EB



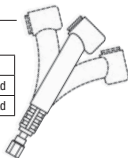
Rep	Item number	WTT	Spare parts
100	W000306471	9	Torch body
	W000306492	17	
	W000306497	26	
101	W000279263	9-17	EB handle
	W000279264	26	
104	W000279241	9-17-26	Microswitch
106	W000279287	9-17-26	Trigger cable EB

Rep	Item number	WTT	Spare parts
107	W000279268	9-17	4 m
	W000279269		8 m
	W000279270	26	4 m
	W000279273		8 m
111.a	W000141831	9-17-26	Quick connection gas
111.b	W000270829	9-17-26	Female connection M12x1
114	W000279266	9-17-26	Gas S connection

Rep	Item number	WTT	Spare parts
115	W000270832	9-17-26	Trigger male connection
116	W000270833	CSB	Plug 5 pins
117	W000279284	9-17	EPDM Sheath
	W000352112	26	
119	W000279422	9-17-26	Gas inlet tube

Options

Item number	WTT	Head
W000306474	WTT	9F head
W000306495	WTT	17F head
W000384993	WTT	26F head



Item number	Description
W000141831	Quick connection Gas For connection to ancient power source, replacing the connection M12x100
W000270829	Female Connection M12x1

EC Declaration of conformity

Manufacturer: LINCOLN ELECTRIC Europe

Herby states that the manual welding torches WTT2 described in this manual are conforms to the provisions of the "Low Voltage" Directives (Directive 2006/95/CEE) and national legislation transposing it ; and moreover declares that standards EN 60974-7 « Arc welding equipment. Part 7 "Torches" » have been applied. This statement also applies to versions of the aforementioned model.

This EC declaration of conformity guarantees that the equipment delivered complies with the legislations in force, if it is used in accordance with the enclosed instructions. Any different assembly or modification renders our certification void. It is therefore recommended that the manufacturer be consulted about any possible modification. Failing that, the company which makes the modifications should ensure the recertification. Should this occur, the new certification is not binding on us in any way whatsoever. This document should be transmitted to your technical or purchasing department for record purposes.

RoHS Declaration of conformity

Manufacturer: LINCOLN ELECTRIC Europe

Herby states that the manual welding torches WTT2 described in this manual are conforms to the DIRECTIVE 2002/95/EC OF THE EUROPEAN PARLIAMENT AND OF THE COUNCIL of 27 January 2003 (RoHS) on the restriction of the use of certain hazardous substances in electrical and electronic equipment while the parts do not exceed the maximum concentrations of 0.1% by weight in homogenous materials for lead, mercury, hexavalent chromium, polybrominated biphenyls (PBB) and polybrominated diphenyl ethers (PBDE), and 0.01% for cadmium, as required in Commission Decision 2005/618/EC of 18 August 2005.